



LITTLE ROCK
SCHOOL DISTRICT

LRSD.org



2019 Community Report

Building **STRONG SCHOOLS**
and Even **STRONGER COMMUNITIES.**

Message from Superintendent Mike Poore



LITTLE ROCK
SCHOOL DISTRICT

Greetings LRSD Community Family,

I always look forward to the production of this Community Report. Many may not realize that we actually do not have to produce this document. The State now simply requires updated information on our webpage. In the Little Rock School District (LRSD) we still value, and hope you will as well, the production of this report and the significance of having this document available in hard copy and in a virtual format.

I look forward to preparation of our Community Report because it allows us as staff to take stock of this past year's accomplishments, share upcoming challenges, and highlight initiatives that are underway. Since my arrival at LRSD, we have used a phrase that I still feel is very appropriate, "The Power of Us." Simple terminology - but it fits well with successes we had this past year, how we plan to overcome our challenges and how our current work is being driven.

Another key element of a report such as this is to demonstrate accountability to the citizens who support our school district through their tax dollars. We take the responsibility of the dollars you entrust to us very seriously. We are proud of improvements in our facilities both in new instructional materials, new security systems, and enhanced learning environments for our students. Equally important to note is that we continue to receive high marks for fiscal management through the State Financial Audit system. I think we do a great job of stretching the dollar, accounting for every penny, and for making sure that the resources we expend have an impact on the children we serve.

This year our theme to compliment the "Power of Us" was to "Lay the Foundation." This phrase ties nicely to the work in which our staff was engaged for the 2019-20 school year. First and foremost, we could not be more serious about our approach to reading instruction. We have been complimented by the Arkansas Department of Education (ADE) on our intense focus to implement the Reading Initiative for Student Excellence (R.I.S.E.) training for staff. We have also provided all new materials to support dyslexic learners for students of all ages and new literacy materials for staff (Secondary in 2018-19, Elementary in 2019-20), and conducted ongoing Professional Development for staff and administration to sharpen skills and enhance collaboration approaches on this key delivery. We have also worked on "Laying the Foundation"

on project-based learning. We know that you can't beat having students fired up to be in a classroom, and nothing excites a learner more than to be engaged and feeling that his/her work is relevant. Finally, we know that any foundation work has to include the development of and intentional effort to enhance our school and District cultures. I take great pride in the fact that our learning environments are all very caring and that staff members are always considering how to support each other, as well as seeking to instill greater confidence in each learner.

We could not do any of our work without the support of this community. We value the parents and community members who consistently step up to support LRSD. That is reflected by another banner year in volunteerism last year. We exceeded \$27.0 million in volunteer hours. I believe we will beat that record again this year.

As LRSD transitions back to local control with school board elections in November of 2020, we all must commit to helping our District continue to grow and prosper. That can happen by volunteering to read to students through AR Kids Read, by agreeing to be a mentor to a young person, or participating in a school or District project. We have something for everyone. Please also step up to support the Community Schools model that is being developed between Mayor Frank Scott's office, LRSD, and the ADE. This model is not designed to have the aforementioned agencies direct or dictate, but to have local school communities develop a plan that utilizes community resources to address the needs the local school community identifies. If we move forward on this model and truly come together, our students will be the clear winners, our communities will become stronger, and the reputation of our city and our school district will be enhanced. Is this not the "Power of Us?"

I am proud to serve as your superintendent. LRSD is a community rich with history, it is a school district that has accomplished amazing things these past several years, and it is the most important vehicle to drive our city forward. I look forward to our future work and thank each of you for the support you are already providing.

Sincerely,

Michael Alan Poore
LRSD Superintendent



Feet to the Seat Campaign encourages LRSD students to be at school every day

September was "Attendance Awareness Month" and LRSD kicked off its second annual "Feet to the Seat" - Chronic Absenteeism Campaign. Cloverdale Middle School was selected to host the kick-off because of its strides in improving attendance last school year. Also, last year, 20 campuses participated in a targeted campaign effort to help push a message about the importance of school attendance district-wide. This year, the effort includes all schools.

Additionally, Supt. Mike Poore announced a new task force, comprised of educators, parents and community members, whose goal will be to develop strategies to decrease chronic absenteeism.

"It takes all of us working together - home, school, and community - to provide the support our students need," said LRSD Superintendent Mike Poore. "We are grateful for this important partnership with Heart of United Way, the Optimist Club, and AR Kids Read. Having a campaign that creates awareness and encourages regular school attendance is one of the most powerful ways we can help prepare our students for success."

Facts about chronic absenteeism:

- Students are considered chronically absent when they miss 10% of the school year for any reason. You may not realize it, but that's just two days per month!
- Students who are chronically absent do not perform as well academically. Children who are chronically absent are less likely to read proficiently by the end of third grade, which is a key indicator toward future success. In later grades, chronic absence is a key warning sign that a student will drop out of school.
- Being present in the classroom is key to the development of social skills that students need.
- The Little Rock School District will continue to host several events to bring awareness to the ongoing campaign to increase attendance, including an Instagram contest and community walks.



Verizon Wireless donated \$5.4 million worth of iPads and data plans to three Little Rock School District middle schools: Cloverdale, Mabelvale and Mann Magnet. During Cloverdale's launch, students received instructions for their equipment and also had an opportunity to fly a drone using an iPad. It was an exciting event and we thank Verizon for their partnership with the LRSD.

\$5.4 million Digital Promise

This partnership will provide every student and teacher a mobile device and data plan giving them access to the internet and allowing them to be engaged learners beyond the classroom. Our teachers will use this technology to create innovative and engaging lessons to enhance learning and students will be taught how to use this technology responsibly and safely. Our partnership with Verizon and Digital Promise will not only make technology an integral part of the daily learning environment, but also give students the opportunity to learn in new and innovative ways.

Hall Has Magnet Appeal!

Combine School of Innovation and Ford NGL and you get a unique STEAM (Science Technology, Engineering, Art and Math) model, which will be offered at Hall High School next year! Starting in the 2020 school year, students will have the opportunity to explore these options and more. The bold new plan for Hall includes curriculum linked to medical professions and computer science for grades 9-12. Students completing 8th grade at Forest Heights STEM Academy will be given preference for admission to the Hall STEAM Magnet. Of particular note for students who enjoy hands-on learning, will be the opportunity to participate in eSports through the Arkansas Activities Association. This platform is all the rage among young people, who could probably teach adults a thing or two about this form of sports competition using video games. Hall will be the exclusive high school for eSports through the 2022-23 school year. Pique your interest? Visit the Student Registration page of lr.org for more. (Details about Ford NGL found on page six of this report.)

LRSD's Got Talent

Talented actors, artists, dancers and musicians – you name them, we have them! LRSD provides creative and performance platforms through which your student can shine. In addition to the important role they play in school curriculum, the arts are celebrated annually through a showcase of K-12 students at “Artistry in the Rock” (AITR). March 16-19, 2020 will mark the 10-year anniversary for AITR with a goal of making this celebration bigger and better. During AITR, hundreds of pieces of top student artwork are displayed at a gallery walk, with student entertainment highlighted throughout the day. On the final night of the event, attendees are treated to live performances from award-winning student musicians and a silent auction that features student and teacher art. Proceeds benefit scholarships for LRSD seniors pursuing arts-related degrees. Between now and March, check LRSD.org for details on performances throughout the city, leading up to AITR 2020.



You Rang?

Can't tell you the number of times we receive calls about missed calls from the District. Take heart, miss calls and/or messages no more! **Simply download the free Blackboard App for Little Rock School District in iTunes and Google Play and it will store incoming messages to your Smartphone/device.** The other great perks connected to Blackboard and the ParentLink notification system used by the District to keep you in the loop – you get to select how, when and where you want to receive your messages: phone, text, email or a combination. Blackboard will only override those settings in cases of emergency.

Moved or Changed your Phone Number?

Inclement weather can hit at any time. Be sure to keep your contact info updated so the District may contact you. If a decision is made to close schools, we'll notify you the following ways:

- ParentLink (call, email, text and App)
- Website
- Social Media
- LRSD Now Blog
- Traditional Media (television, radio and print news)

Schools Closed, What's Next?

Don't forget to brush up on your student's AMI plan! With the Alternate Method of instruction, learning continues no matter the weather. You should have received information from your child's school about class assignments on inclement weather days or any other day school may be closed during an unforeseen emergency. Now is a good time to familiarize yourself with the plan, visit LRSD.org, click on Parents, then on the tab that says “AMI.”



2018-2019 LRSD HIGHLIGHTS



**PARTNERS IN
EDUCATION**

For information about how your organization or business can become a LRSD Partner in Education (PIE), contact the ViPS office: 447-ViPS (4450) or tamara.blaylock@lrzd.org

Where We're Going

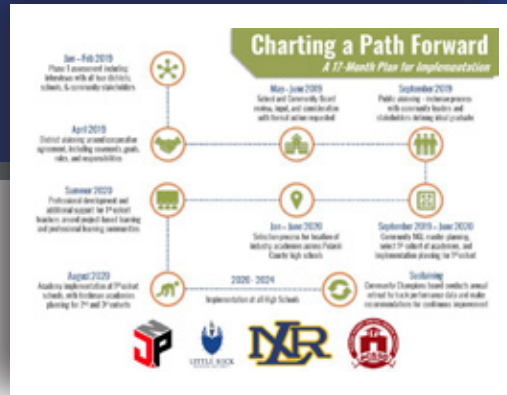
What if your student could have an opportunity to pursue a specific career area while still in high school? Through the Ford Next Generation Learning model, that will be a reality for high school students across LRSD. In an unprecedented partnership, superintendents and chambers of commerce from the metro areas of Little Rock, North Little Rock, Pulaski County and Jacksonville have teamed up to support and implement the model.

In addition, a study and visioning sessions were conducted and included community stakeholder meetings with approximately 120 school officials, teachers, parents, students and alumni from all the high schools; district and state education officials; school and community advisory board presidents; teacher association representatives; leaders from UA Pulaski Tech; state legislators;

chambers of commerce; and business and community leaders.

Momentum for Ford NGL is growing as the business community continues to step up in a big way to provide partnerships and financial support for implementation. The partnerships will help create an array of academies that allow students to take courses aligned with their interests and expose them to real-world opportunities, career mentors, industry certifications, job shadowing and intern/externships.

High Schools are poised to introduce several themed academies for 9th grade, with proposed career academies in business and computer science, engineering, aerospace and health sciences, and Leadership, Hospitality and Tourism, to name a few.



Safe and Secure Campuses

As part of a security upgrade, LRSD completed the installation of new, high-tech security cameras at all middle and high schools throughout the District – that's 1,350 cameras at the secondary level alone. Elementary campuses have 1,400 security cameras for a whopping combined total of nearly 3,000. Plus, all alarm systems have been upgraded, and as an added layer of security, the RAVE panic button APP is available to all staff. RAVE uses GPS to provide immediate contact with 9-1-1, greatly enhancing response time. The LRSD Safety and Security team reaffirms its safe school priority with increased security patrols as reflected in statistics since the start of the current school year:

LRSD Security Calls for Patrol Service

8/1 — 12/10/2019 (77 school days)

Accidents	24
Undefined Calls for Service	157
Bus Disturbance	26
Bus Stop Monitor	2051
Home Visit	9
Medical	17
Missing Student	9
Parent Meeting	5
Elem School Check	5050
School Disturbance	216
Secondary School Check	618
Traffic	171





Getting Ready for the Gryphons

Hard to believe, but with the exception of fixtures and furnishings, 90% of the building is complete at the new Little Rock Southwest High School. Painted walls, flooring and lighting in the A-C wings that comprise the 3-story academic building area are a great sign that construction continues to be on schedule, with a targeted Fall 2020 opening. In case you haven't seen it lately, you should check out the drone video on lrswhs.lrsd.org. Academic programming for the new school will be further enhanced with the addition of a magnet component tied to weighted concurrent credit courses and the FORD NGL model with specialized academies.

Principal Marvin Burton couldn't be prouder of the academic amenities and what they mean for the students' futures, but also beams when it comes to athletics. The school will move to a 7A classification. "Oh, we will win championships," Burton promised with a wide smile. Crews have bricked the exterior, and substantially completed the 2,500 seat basketball arena (90%), erecting a first-of-its-kind in Arkansas, NBA-style, digital scoreboard. Foundational work is underway for the home section of the 4,000 seat football field, which is located beneath rows of elevated suites and press boxes. Excitement continues to build in the community with Burton and lead architect Sarah Bennings (Polk Stanley Wilcox) receiving daily requests for tours.

Monthly transition meetings and activities continue with student/staff/parent teams from JA Fair and McClellan and approximately 300 Hall students zoned for the school. (These are Hall students who reside in the LRSW zone but currently attend Hall). Stay engaged with the Gryphons by following us on Twitter and liking us on Facebook: @LRSouthwestLRSD.

Fun Facts: School Capacity - 2,250 * Total Sq Ft - 410,000 * Facility - 950 Sq Ft standard classrooms with labs up to 1,500 Sq Ft for science, visual and performing arts, robotics, and drafting * 1,200 seat auditorium with orchestra pit * 20 plus proposed Advanced Placement courses * Dance studios that can be converted to blackbox theater * Studio Apartment-style CBI classrooms



Community Connection Drives Bright Futures

Now in its third year of implementation in our city, Bright Futures provides a path for communities to collectively channel resources to support students who may face challenges beyond the classroom that impact their learning. The Bright Futures model brings together businesses, human service agencies, faith-based organizations, and parent groups and partners them with schools in a way that helps quickly identify and meet students' basic needs within a 24-hour period, using a social media platform. Bright Futures uses Facebook to issue a "community call to action" and have the community respond. LRSD, the City of Little Rock and Goodwill Industries have teamed up to share this approach to serve students with the most need. Help us answer a call to action by liking the **Bright Futures Facebook page: www.facebook.com/BrightFuturesLittleRock**, responding to a need or sharing a request.



PVSOI Charts New Future and Undergoes Name Change

Pinnacle View School of Innovation opened in 2019 with its first group of eager 9th graders. Housed in the building adjoining the Pinnacle View Middle School, the campus offers a unique academic approach, designed to prepare students for college and career. The school will continue its focus next year on instructional practices that incorporate project-based learning where students have the opportunity to learn more than just content, but under a new school name: **West High School of Innovation (WHSOI)**, allowing the campus to have an identity connected to its status as a high school. **WHSOI students** have an opportunity to work in groups, across disciplines to engage in a real-world application to the curriculum.

WHSOI is also working with local colleges and universities to create opportunities for students who wish to pursue an Associate Degree upon graduation. The campus will add a grade each year under the School of Innovation model until grades 9-12 are fully in place. Additionally, plans include adopting a school attendance zone, concurrent with the existing Pinnacle View Middle School zone, to serve students at such time that LRSD provides a traditional high school in this area of the District.

Community Partners for Reading Initiative

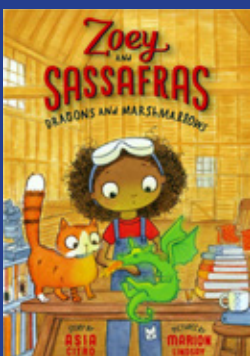
One District One Book – One Literacy Mission



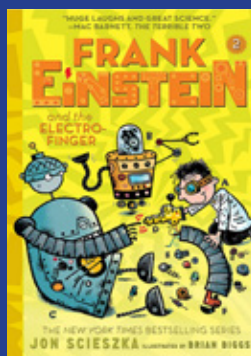
SPRING 2020

Following back-to-back successful campaigns, LRSD continues its **One District One Book** reading effort. Through **One District One Book**, all 13,000 elementary students simultaneously read the same book. Community partners pitch in to purchase the books. Families are encouraged to read the books together at home. While at school, students enjoy participating in chapter-themed projects, science experiments and other related activities. This year's book is **The One and Only Ivan**—told through the title character, a gorilla who lives at a shopping mall. Sponsors include the Little Rock Zoo, Southwest Power Pool, Arvest Bank, Rotary Club 99 and Economics Arkansas. A special zoo day connected to the campaign was hosted in November for LRSD families. Additional dates will be shared on the District website and social media about upcoming **One District One Book** events.

As a result of LRSD's advocacy for literacy, the District now serves as a national model, earning LRSD the **One District One Book** Award in 2018.



FALL 2018



FALL 2018



SPRING 2019

Literacy on the R.I.S.E.

LRSD has taken measures to ensure that students receive the individualized literacy support they need. In response to the Reading Initiative for Student Excellence (R.I.S.E.) Initiative, the District adopted literacy resources that closely align with the science of reading: Heggerty Phonemic Awareness in K-2 to address phonology; Foundations® by Wilson Language Training to address phonics; and Wit and Wisdom by Great Minds to address Language Comprehension. School leaders and instructional coaches have been trained to observe and support implementation of programs, and to ensure that teachers are prepared to deliver these resources with fidelity and skill.

District team members received professional development from Wilson and Great Minds representatives, who provided on-site coaching and helped develop models to be used as demonstration sites for other teachers and leaders. Additional support is also provided throughout the year.

An annual R.I.S.E. Training calendar has also been established to ensure teachers are provided with ample opportunities to complete their required pathway. Currently 341 teachers have completed phase 1 of a Proficiency pathway; approximately 300 additional teachers have completed at least 50% of their required pathway; and 180 teachers have completed 60-100% of the available pathway for Awareness through AR Ideas. Additional training sessions are scheduled in the spring semester and summer. Forty-one elementary principals, assistant principals, and central office leaders have completed the SoR Assessor's training.



Dyslexia Training and Support

Since February 2019, LRSD has enhanced its commitment to meeting the needs of students with characteristics of dyslexia, increasing intervention services by 50%. LRSD adopted all three Tiers of Wilson Language Training® in May 2019. One-hundred-thirty-two LRSD teachers subsequently completed training in the Wilson Reading System® Introductory Course. Wilson Reading System® is designed to support students in 2nd to 12th grade who have intensive reading and spelling difficulties, including characteristics of dyslexia. The Tier 3 program for students in kindergarten and first grade includes additional small group instruction with Wilson Foundations®. All students in K-3 receive instruction in Foundations® as a part of LRSD's core literacy instruction.

Currently, 1,466 students receive Tier 3 dyslexia intervention in LRSD. Students who need mild to moderate support in word-level reading and spelling receive Tier 2 support with a second dose of Foundations® in K-3rd grade, and with the Just Words® program in 4-12th grade. For more information about screening, placement, services, and support for students with characteristics of dyslexia, please visit www.lrsd.org/dyslexia.

Resources to Support Families

LRSD is fortunate to be the recipient of multiple federal programs that provide supplemental financial support to our schools, students and families. A few activities and initiatives are highlighted below:

Title I Parent and Family Engagement (PFE)

The LRSD Title I Parent and Family Engagement Office supports programs, activities and procedures for improved parent communication and involvement and also serves to reduce barriers for parent and family engagement in our schools. Our initiatives provide school staff, parents, and families with professional development, technical support, materials, and resources to guide and support parental involvement and engagement efforts. Our Partnering for Excellence Series provides a variety of topics and activities to support home-to-school connections.

These activities are linked to our website so you may read more detailed information about these awesome opportunities for our school community. LRSD Cluster Teams, NBA Math Hoops, Parenting Partners, and Imagine Learning Summer Slide Prevention have provided support and service to more than 900 families.



Families-In-Transition (F.I.T.)

The F.I.T. Team serves as the primary liaison within LRSD to connect school counselors with identified homeless children and youth who need services. Title I funding helps purchase clothing, school supplies, and hygiene products. In addition, various partnerships assist by donating items that are typically not purchased with federal funds such as band instruments, eye glasses, athletic gear, fees for graduation and clothing for special events. To date, this effort has served over 250 students in all District schools and programs, except 5 schools and 1 early childhood center. The F.I.T. team works closely with the Student Registration Office to ensure timely services for identified students/families and collaborates as needed with our Transportation Department to ensure homeless students are receiving transportation services in a timely manner.

For more information, contact the LRSD Title I Parent and Family Engagement Office, 447-3350.



21st Century Community Learning Centers

LRSD operates eight (8) ADE 21st Century Community Learning Center (CCLC) sites:

Bale Elementary School	Mabelvale Elementary School
Carver Magnet Elementary School	Mabelvale Middle School
Chicot Elementary	McClellan High School
Hall High School	Rockefeller Elementary School

Our students are also served at several community-operated sites. ADE 21st Century federal funds are received through a competitive grant process. Funds are utilized for after-school and summer programs. Grants are issued for a five year period. Currently, LRSD 21stCCLC after-school programs serve approximately 600 students with intensive tutoring and enrichment including fitness courses (dance, Zumba, taekwondo), robotics, drama, photography, chess, and more. There are three primary fund goals: (a) Provide opportunities for academic enrichment, including tutorial services; (b) Offer students a variety of enrichment to support academic achievement and positive youth development; and (c) Offer students a broad array of supportive enrichment to support academic achievement and positive youth development.

Elementary Teachers of the Year



M. Denise Holley
Bale



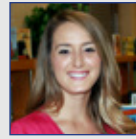
Sara Jane Young
Baseline



Alicia R. Jones
Booker



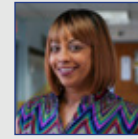
Tommy Lee Smith
Brady



Natalie Barrett
Carver



Laura Comstock
Chicot



Brenda Swinton-Day
Dodd



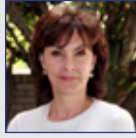
Kimberly Kahler
Fair Park ECC



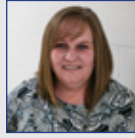
Kenya Brooks
Forest Heights (K-5)



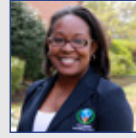
Jenny Holmes
Forest Park



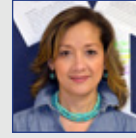
Jennifer Jeffries Welborn
Fulbright



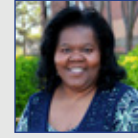
Rebecca Long
Geyer Springs



Jessica E. Sanders
Gibbs



Carmen Walker-Pierce
Jefferson



Maria A. Mitchell
King



Stacy Burnett
Mabelvale



Kristin McDonald
McDermott



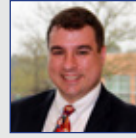
Remona D. Moore
Meadowcliff



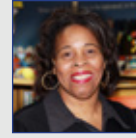
Donna Lashawn Barton
Otter Creek



Tracy DeClue
Pulaski Heights



Jeffrey Paul Whitlow
Roberts



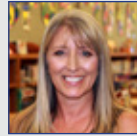
Sandra Hill Young
Rockefeller



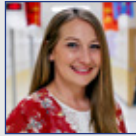
Yvonne Roach
Romine



Sharon Renee Sims Walker
Stephens



Debbie Gross
Terry



Stacie Breshears
Wakefield



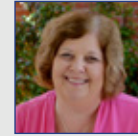
Franzetta McNeil
Washington



La Dina R. Brister
Watson



Zora Y. Madison
Western Hills



Mary L. Riggins
Williams

Middle School Teachers of the Year

High School Teachers of the Year



Gail Patricia Doss
Cloverdale



Brooke LaShay Sanders
Cloverdale



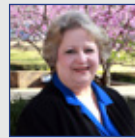
April Moore
Dunbar



Terentia A. Phillips
Dunbar



Daniel Fondren
Forest Heights (6-8)



Stella Cameron
Central



Rachel Rigbsy
Central



Ruthie Whitfield
Walls
Central



Edith J. Callaway-Frazier
Hall



Kelly Taylor
Hall



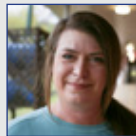
Mario D. Tims
Forest Heights (6-8)



Julie Hunt
Henderson



Jeremy Williams
Henderson



Amy Brockway
Mabelvale



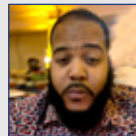
Latonya Jackson
Mabelvale



Leigh-Alyson Walters
Hall



Deidra L. K. Brown
J.A. Fair



Prince Garth
J.A. Fair



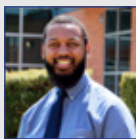
Jerica Moore Jones
J.A. Fair



Amy L. Howard
McClellan



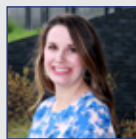
Carolyn Johnson-Powell
Mann



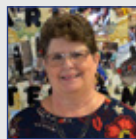
Nicolas DeLane Williams
Mann



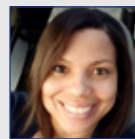
Lolitia L. Hayes
Pinnacle View



Lindsay Lockwood
Pinnacle View



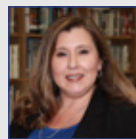
Janet Meyer Buford
Pulaski Heights



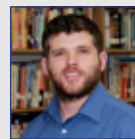
TaShenia McMillan
McClellan



Hiram Sumlin
McClellan



Leslie Harden
Parkview



Chris Luckey
Parkview

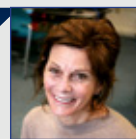


Mark A. Shepherd
Parkview



Alvin Darnell Turner
Pulaski Heights

Non-traditional School Teachers of the Year



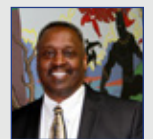
Suzanne Bonaminio
Adult Education Center



Eric R. Brandon
Accelerated
Learning Center



Roger Robinson
Metropolitan
Career-
Technical Center



Phillip S. Wilson
W.D. "Bill"
Hamilton Learning
Academy

Little Rock School District TEACHER OF THE YEAR



Congratulations Jeff Whitlow!
2019 LRSD Teacher of the Year



As part of his “Passion Project” during his reign as 2019 LRSD Teacher of the Year, Jeff Whitlow, Roberts Elementary, visited every campus level Teacher of the Year. He also discovered the ‘why’ of what they do every day.

2019 LRSD Teacher of the Year • First Student - Presenting Sponsor



JESSICA E. SANDERS
Elementary Teacher of the Year



CAROLYN JOHNSON-POWELL
Middle School Teacher of the Year



STELLA CAMERON
High School Teacher of the Year



Top scholars honored at Academic Signing Day

The Little Rock School District, in partnership with the Public Education Foundation, honored a record 101 students representing all five LRSD high schools at the 15th annual Academic Signing Day in the Grand Hall of the Arkansas Governor's Mansion.

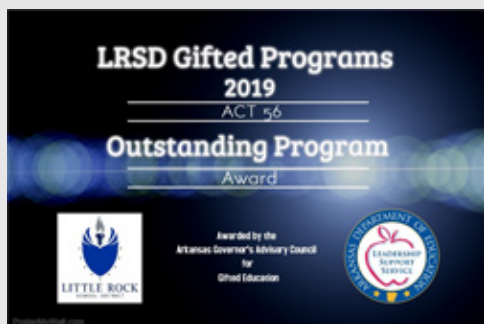
Class of 2019 honorees were accepted at prestigious higher education institutions throughout the country, including: Harvard, Yale, the University of Washington at Seattle, Scripps College, Colby College, Johns Hopkins University, the Massachusetts Institute of Technology, the Wharton School at the University of Pennsylvania, Northwestern University and the U.S. Air Force Academy, to name a few.

The event mirrors athletic signing days, where top athletes sign letters of intent to compete at the collegiate level. As with athletic signings, high-achieving students choosing to study here in Arkansas and out of state are equally celebrated.

To qualify for the event, graduates are required to achieve at least one of the following: a cumulative 4.0 grade-point average in grades nine through 12; valedictorian, salutatorian, or the third or fourth highest rank in their class; National Hispanic Scholar; National Merit Semifinalist; and/or National Merit Commended Scholar.

Annually, LRSD students are awarded more than \$23 million in scholarships.

Freshmen should start inquiring at the beginning of their 9th grade year about participating in this prestigious academic celebration.



Outstanding Program of the Year Award

LRSD Gifted Program was honored with the "Act 56 – Outstanding Program of the Year Award" as selected by the Governor's Advisory Council for Gifted Education. The District serves more than 4,500 students identified as Gifted and Talented through various program options that include Pull-out programming, GT Seminar, Pre-AP and AP classes. The main approaches to gifted education are enrichment and acceleration. Duke Talent Identification Program, Chess Club, and Destination Imagination are a few of the exciting offerings under LRSD's GT umbrella. If you'd like to know more about the District's award-winning program, visit the department's page on LRSD.org.

LRSD HIGHLIGHTS



- Graduation rates improve from 74% three years ago to 82% this year
- 16 National Merit Semifinalists and three National Hispanic Scholars for 2019
- LRSD's 2018 Teacher of the Year and 2019 Arkansas Teacher of the Year - Stacey McAdoo
- State Champs in Swimming and Tennis
- 2nd Lien Loan Projects – HVAC, roofs, security camera/alarm upgrades, air conditioning at all high school gyms, resolution of drainage issues, and improvements at athletic facilities
- Scholarship total of \$23.0 million
- ViPS Partnerships - \$27.2 million in volunteer support
- \$150,000 grant for new Health Clinic at Chicot Elementary
- Little Rock Southwest High School, slated to open in 2020, will be one of the largest state-of-the-art secondary campuses in Arkansas
- LRSD's Pre-K/Early Childhood Centers continue to serve as one of the strongest early learning programs in the State
- Career Education Expansion – doubled student numbers in medical program and Police and Fire Academies
- New Career Academy Approach through Ford Next Generation Learning
- Named among top 20 "Best Places to Work in Little Rock" by zippia.com in 2018 and 2019



2018-2019 ANNUAL REPORT LITTLE ROCK SCHOOL DISTRICT

The Little Rock School District (LRSD) is required to prepare an Annual Report for presentation to the community. The 2018-19 report highlights progress and achievements and provides a summary of planned improvement processes and future directions. LRSD experienced significant progress last year as the District and community worked together to meet the needs of each student. From rigorous academic engagement for those identified as gifted and talented, to support for those facing learning, speech or physical challenges, LRSD offers unique, comprehensive educational approaches for pre-K to 12th grade students.

The District takes pride in its highly qualified teachers – nearly half of all classroom teachers have a masters or doctoral degree, and 147 have National Board Certification – among the most in the state. LRSD continues to operate the state's only K-8 STEM campus, eight magnet schools and a uniquely focused language and literacy elementary academy, and last year, prepared for the opening of a west Little Rock High School with a 9th grade class at Pinnacle View School of Innovation. Subsequent grades will be added each year for a 9-12 delivery. The District also serves more than 1,700 pre-K students, making LRSD the largest provider of public preschool programs. Studies show that students from every socioeconomic background who attended a LRSD pre-K program outperformed students who did not use LRSD's pre-K program in every skill area.

High school college preparatory programs, including pre-AP, AP, classes with local universities, and the District's Excel program - introduced in 2016, provide multiple options for families. These programs allow students to align their educational experience with their interests, preparing them for college and career and equipping them to meet the challenges of a global society. LRSD consistently places among the top tier of state schools with National Merit Semifinalists, as well as Commended, National Hispanic, and AP Scholars.

LRSD is proud of its highly accomplished students and the community partnerships that enhance their educational experiences. Students will continue taking their learning to the next level at the newly constructed career-academy-focused Little Rock Southwest High School, slated to open in 2020.

LRSD is in its final year of state oversight following an initial "Academically Distressed" designation for 6 of 48 schools in 2015. The designation was dissolved due to new legislation and the remaining schools were removed. Under the legislation, the District was classified in "Level 5 – in need of intensive support" as a result of eight newly identified schools.

To better determine areas of needed support for those schools and to provide resources that include best practices for all LRSD campuses, the District has worked in collaboration with the Arkansas Department of Education to provide additional assistance and created a School Improvement Plan (SIP) to guide each elementary, middle and high school with a roadmap that identifies and organizes strategies and resources that will lead to student success. Each school's SIP highlights three main goals for improvement, with one of the goals being academic improvements.

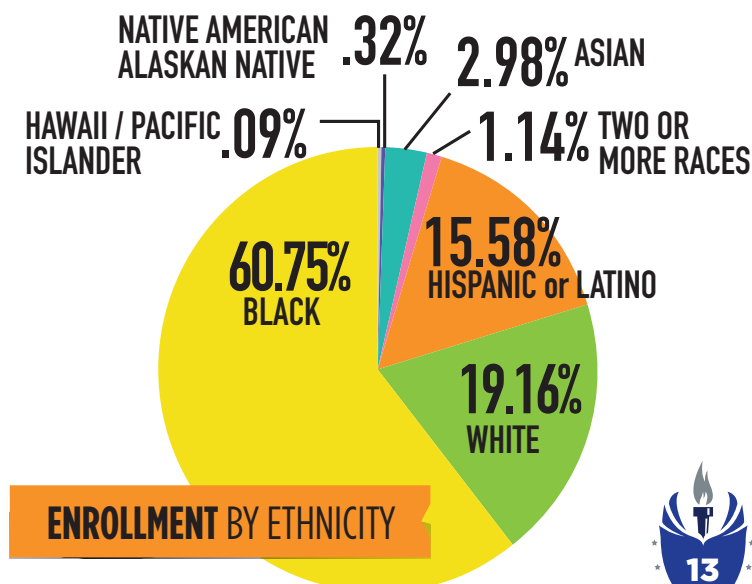
The District also created a District Support Plan (DSP) to facilitate implementation of each school's SIP and to specifically address deficits in academic achievement. Some actions for reducing academic deficits include: implementing the District's literacy curriculum with fidelity at every school, observing instructional delivery in classroom, monitoring academic progress with interim assessments, continued collaboration through Professional Learning Communities, and utilization of data to guide instruction and support to students.

The administration continued its stakeholder engagement efforts integrating interactive social media outreach, public forums, and superintendent-led Community Walks. Those efforts will continue in the 2019-20 school year.

Over the past three years, LRSD has reduced its budget by \$26 million, while implementing proven reforms that include improving systems, hiring and retaining excellent teachers, and making academic gains. A Second Lien loan has allowed the District to improve facilities while addressing some of LRSD's most urgent physical plant needs. The District continues to seek financial efficiencies in order to maintain a focus on strong academic achievement and fiscal stability.

The LRSD community is represented by a 7-member, state-appointed Community Advisory Board which succeeded the Civic Advisory Committee at the end of the 2015-16 school year. Arkansas Department of Education Secretary Johnny Key serves as the District's Board of Directors.

With its mission to provide all students with equitable access to educational opportunities to ensure bright futures, LRSD reaffirms its commitment to collaboration, transparency and a return to local control. The District will continue to proactively address student achievement, teacher/leader quality, parental involvement, community engagement, and financial stability.



PROGRESS TOWARDS DEPARTMENT OF EDUCATION GOALS

• SCHOOL IMPROVEMENT DESIGNATIONS •



2018-2019 School Year Accreditation Status: All 42 schools fully accredited

2018-2019 School Improvement Designations

Twenty-two (22) schools were classified as “In Need of Support and Improvement” schools. LRSD identified as a Level 5 district. Needs Support and Improvement schools had a lower Every Student Succeeds Act (ESSA) School Index score overall or for a specific subgroup. A high school will be “In Need of Support and Improvement” if it does not meet the graduation rate target. Fourteen (14) schools were identified as In Need of Targeted Support and Improvement (TSI) or Additional Targeted Support (ATS) schools. Schools are identified as in need of TSI based on their classification as a Title I school and their ESSA School Index score for any subgroup falling below an established 1% cut score for three consecutive years. Schools are identified as in need of ATS when a subgroup is also performing below the 5% cut score. Eight (8) schools were classified as In Need of Comprehensive Support and Improvement (CSI) schools. CSI schools include 5% of Title I schools with the lowest ESSA School Index score over a three year period.

AP and PSAT/NMSQT Results

AP RESULTS

The Advanced Placement (AP) program offers high school students a rigorous, college-level curriculum that readies students for college. Students scoring a 3, 4, or 5 on the AP exam may receive college credit. The District had 1,502 exams with a qualifying score of a 3, 4, or 5. An AP Scholar is a student who received scores of 3 or higher on three or more AP exams. The District has 309 scholars with the following designations: AP Scholar, AP Scholar with Honor, AP Scholar with Distinction, and National AP Scholar. Thirteen students received an AP Capstone Diploma.

PSAT/NMSQT

The Preliminary SAT/National Merit Scholarship Qualifying Test (PSAT/ NMSQT) serves as an initial screener for scholars. The nationwide pool of Semifinalists represents fewer than one percent of U.S. high school seniors and only includes the highest scoring students in each state. 16 LRSD students were named National Merit Semifinalists.



PROGRESS TOWARDS DEPARTMENT OF EDUCATION GOALS

2019 RANKINGS:

Top 20 Schools in Arkansas with Most Overall Growth (based on ACT Aspire)

#20	Jefferson Elementary	OVERALL
-----	----------------------	---------

Top 5 Schools in Central Region with Most Math Growth (based on ACT Aspire)

#5	Jefferson Elementary	MATH
----	----------------------	------

BEATING THE ODDS SCHOOLS

High Math Growth: Elementary Level (Central Region)

#5	Wakefield Elementary
----	----------------------

High ELA Growth: Elementary Level (Central Region)

#3	Wakefield Elementary
----	----------------------

US NEWS AND WORLD REPORT RANKINGS

BEST HIGH SCHOOLS IN ARKANSAS

#12 of 266	Parkview Magnet High School
#18 of 266	Central High School

BEST HIGH SCHOOLS IN ARKANSAS METRO AREA

#5 of 38	Parkview Magnet High School
#6 of 38	Central High School

2019 Schools Exceeding Overall Growth Expectations (based on ESSA Overall VAS)

BASILINE ELEMENTARY SCHOOL
CHICOT ELEMENTARY SCHOOL
DAVID O. DODD ELEMENTARY SCHOOL
DON ROBERTS ELEMENTARY SCHOOL
FOREST HEIGHTS STEM ACADEMY

FOREST PARK ELEMENTARY SCHOOL
FULBRIGHT ELEMENTARY SCHOOL
GIBBS MAGNET ELEMENTARY SCHOOL
HALL HIGH SCHOOL
JEFFERSON ELEMENTARY SCHOOL

MANN MAGNET MIDDLE SCHOOL
MCDERMOTT ELEMENTARY SCHOOL
OTTER CREEK ELEMENTARY SCHOOL
PARKVIEW MAGNET HIGH SCHOOL
PINNACLE VIEW MIDDLE SCHOOL

PULASKI HEIGHTS ELEM. SCHOOL
ROCKEFELLER INCENTIVE ELEM.
TERRY ELEMENTARY SCHOOL
WAKEFIELD ELEMENTARY SCHOOL
WILLIAMS MAGNET ELEM. SCHOOL

2019 Schools Exceeding Math Growth Expectations (based on ACT Aspire)

DON ROBERTS ELEMENTARY
FOREST PARK ELEMENTARY
FOREST HEIGHTS STEM ACADEMY
FULBRIGHT ELEMENTARY
GIBBS ELEMENTARY
JEFFERSON ELEMENTARY
MCDERMOTT ELEMENTARY

OTTER CREEK ELEMENTARY
PARKVIEW MAGNET HIGH SCHOOL
PINNACLE VIEW MIDDLE SCHOOL
PULASKI HEIGHTS MIDDLE SCHOOL
TERRY ELEMENTARY
WAKEFIELD ELEMENTARY

2019 Schools Exceeding ELA Growth Expectations (based on ACT Aspire)

DON ROBERTS ELEMENTARY
FOREST PARK ELEMENTARY
FOREST HEIGHTS STEM ACADEMY
FULBRIGHT ELEMENTARY
GIBBS ELEMENTARY
JEFFERSON ELEMENTARY

OTTER CREEK ELEMENTARY
PULASKI HEIGHTS ELEMENTARY
ROCKEFELLER ELEMENTARY
TERRY ELEMENTARY
WAKEFIELD ELEMENTARY





LITTLE ROCK
SCHOOL DISTRICT

ENROLLMENT

(Extended through January 17)

Take advantage of unique and innovative educational opportunities by enrolling in one of LRSD's schools. LRSD offers magnet schools, specialty programs, and career/professional studies, with concurrent credit opportunities.

LRSD Student Registration Office
501 Sherman St. (at Capitol Ave.)
Little Rock, AR 72202

501-447-2950

PRE-K (P3-P4) ENROLLMENT

The LRSD offers a free pre-school education of exceptional quality so your child will have a great start to his/her education. Pre-Kindergarten classes are located throughout the District in both elementary schools and early childhood centers.

501-447-7360

IMPORTANT DATES

**WINTER VACATION
OFFICES & SCHOOLS CLOSED**
Dec. 23, 2019 - Jan. 5, 2020

STUDENTS OUT
Monday, January 6, 2020
Record/Work Day

**STUDENTS OUT/
OFFICES & SCHOOLS CLOSED**
Monday, January 20
Martin Luther King, Jr. Day

PARENT CONFERENCE DAY 1
Thursday, February 20
after school—3 hours
(school in session)

PARENT CONFERENCE DAY 2
STUDENTS OUT
Friday, February 21
Elementary: 8am-12noon
Secondary: 9am-1pm

STUDENTS OUT
Monday, February 24 • Professional
Development

ARTISTRY IN THE ROCK

Monday, March 16 - Wednesday, March 18, 9am-2pm
Thursday, March 19, 9am-2pm and 6pm-8:30pm

ONEROCK STUDENT ATHLETE AWARDS

Monday, April 20

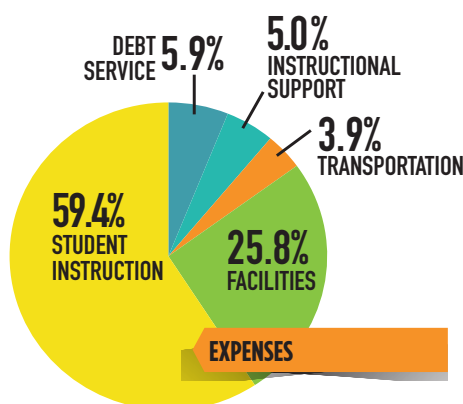
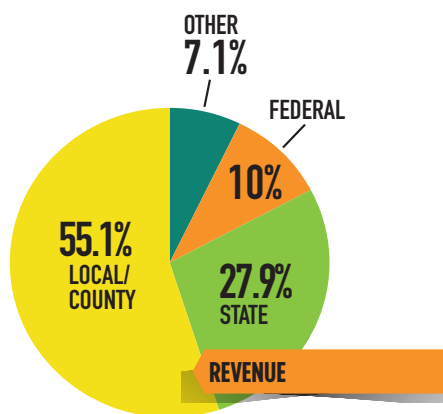
OPPORTUNITY SCHOOL CHOICE WINDOW

May 1 Deadline • Parent application must be postmarked
July 1 • Notification from non-resident district

GRADUATION

ACC - Tuesday, May 12 • 6:00pm (Metro Activity Center)
J.A. Fair - Tuesday, May 19 • 6:00pm (Verizon Arena)
Hall - Tuesday, May 19 • 8:30pm (Verizon Arena)
Parkview - Wednesday, May 20 • 6:00pm (Verizon Arena)
McClellan - Wednesday, May 20 • 8:30pm (Verizon Arena)
Central - Thursday, May 21 • 6:00pm (Verizon Arena)

2018-2019 REVENUE & EXPENSES



REVENUE

Local/County.....	\$171,146,544
State.....	\$86,683,383
Federal Grants.....	\$30,935,814
Other.....	\$21,972,126
Total Revenue.....	\$310,737,867
Tax Rate (Mills).....	46.4

EXPENSES

Student Instruction.....	\$216,327,953
Instructional Support.....	\$18,204,757
Transportation.....	\$14,102,358
Support—Facilities.....	\$93,771,048
Debt Service.....	\$21,552,490
Total Expenses.....	\$363,958,607
Expense Per Pupil.....	\$16,944
Average Teacher Salary.....	\$56,977
First Year Teacher Salary.....	\$34,865

LRSD's volunteer program, Volunteers in Public Schools (VIPS) is a vital component in the operation of all of our schools.

Total Volunteer Hours.....	1,071,464
Equivalent in Dollars.....	\$27,247,329
Total Number of Partners in Education (PIE).....	315