

2019-2020

COMMUNITY REPORT



LRSD.org



Building
**STRONG
SCHOOLS**
and Even
**STRONGER
COMMUNITIES**



LITTLE ROCK
SCHOOL DISTRICT



LITTLE ROCK SCHOOL DISTRICT

NEW Little Rock School District Board



Michael D. Mason
Zone 1
Disbursing Agent



Sandrekkia Morning
Zone 2
Legislative Liaison



Evelyn Hemphill Calaway
Zone 3



Leigh Ann Wilson
Zone 4
Vice President



Ali Noland
Zone 5
Secretary



Vicki Hatter
Zone 6
President



Norma Johnson
Zone 7



Greg Adams
Zone 8



Jeff Wood
Zone 9

Congrats to Little Rock School District's newly elected board members: Evelyn Hemphill Callaway, Vicki Hatter, Michael Mason, Sandrekkia Morning, Leigh Ann Wilson, Ali Noland, Norma Johnson, Greg Adams and Jeff Wood! The nine become the first elected LRSD School Board in nearly six years.

The Board will hold two regularly scheduled monthly meetings on the second and fourth Thursdays at 5:30 p.m. While meetings are virtual, the public may view proceedings on LRSD's Facebook page, Comcast Channel 4/U-verse Channel 99, or lrstdtv.org. Additional information, including how the community may provide public comment, is found on the "Leadership" page of lrstd.org.

Poore Named Superintendent of the Year

In a year that saw unique challenges in education across the country, Superintendent Mike Poore was found navigating a pandemic, facilitating the transition to local governance for LRSD, and managing a budget against the backdrop of a slip in enrollment. But state leaders felt Poore rose to the occasion, and for his ongoing efforts to support students, staff, and families, while continuing to rally community around the District, he was recognized by the Arkansas Association of School Board Administrators (AASA) as 2021 Arkansas Superintendent of the Year.

"I am deeply humbled by this recognition and grateful to be in the company of the distinguished superintendents named before me. I must acknowledge that this is a shared recognition, accomplished with the support of my current LRSD family, as well as previous districts, valued friends, mentors, and colleagues. Working alongside each of them has been the professional and personal joy of my life."



Arkansas Association of Educational Administrators
2021 Arkansas Superintendent of the Year



results, which creates accountability. Growth and achievements are regularly acknowledged, and Jefferson is not only recognized as a high-performing school, but has consistent growth among all subgroups.

Students at Jefferson are encouraged to think critically, to apply knowledge, and to reason abstract concepts across all content areas. Teachers work diligently, creatively and collaboratively to provide data-driven and engaging lessons using Professional Learning Communities (PLCs).

An extremely supportive parent-teacher organization participates in many decision-making processes and hosts a number of events and drives throughout the year to solidify community involvement. From food drives to STEAM nights, Jefferson parents commit thousands of volunteer hours to support their school's staff and teachers.

For these reasons and more, Jefferson Elementary has developed a reputation for academic success within a progressive learning environment where students and their parents feel secure.

Home of the Patriots, Jefferson Elementary has strong ties to its community and is committed both to the growth and happiness of students. Because of these commitments, staff and students alike arrive at Jefferson eager to teach and to learn.

Jefferson is a neighborhood school within the Little Rock Public School District built in 1949. There is low staff turnover and a legacy of students returning to the same great learning institution as generations before them.

While the environment is positive and caring at Jefferson, there are high expectations for academics and behavior. A hands-on principal meets with students individually both before and after assessments to discuss goals and





LR Hall - Where Students' Futures are Powered by STEAM

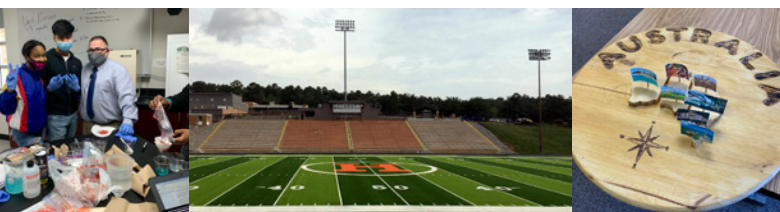
If you ask students at Little Rock Hall High School what gets them excited about their newly reconfigured magnet campus - with all the options - you might get several answers. But, the responses all center around STEAM (Science, Technology, Engineering, Art and Math)! With Engineering and Health Science academies that promote rigorous, academic, hands-on learning, students are taking their education to the next level. They get to choose a magnet pathway in one of these academies during their freshman year and take one course each year in their pathway.

Internships, capstone projects, concurrent college credit and industry certifications are among the other opportunities Hall students will enjoy. Additionally, they'll still be able to enroll in higher level Advanced Placement (AP) classes and take advantage of other electives. Hall also offers all athletic programs, as well as Esports, featuring Hall's competitive multiplayer video game sports team.

"We know Hall STEAM Magnet High School can offer the rigorous, personalized and safe education for students to be successful in high school and prepare them for college and/or career readiness once they graduate," said Magnet coordinator, Joel Spencer. "We invite students and parents to come take a tour at Hall, where we're moving full-steam ahead." To learn more or schedule a tour, email joel.spencer@lrstd.org.

Highlights:

- 97% decrease in behavior issues
- Engineering & Health Science academies
- Highly qualified faculty with HRS Level 1 certification
- Supportive alumni
- Engaged community stakeholders



Get Connected – Stay Connected

Can't tell you the number of times we receive calls about missed calls from the District. Take heart, miss calls and/or messages no more! **Simply download the free Blackboard App for Little Rock School District in iTunes and Google Play and it will store incoming messages to your Smartphone/device.** The other great perks connected to Blackboard and the ParentLink notification system used by the District to keep you in the loop – you get to select how, when and where you want to receive your messages: phone, text, email or a combination. Blackboard will only override those settings in cases of emergency.

Moved or Changed your Phone Number?

Inclement weather can hit at any time. Be sure to keep your contact info updated so the District may contact you. If a decision is made to close schools, we'll notify you the following ways:

- ParentLink (call, email, text and App)
- Website
- Social Media
- LRSD Now Blog
- Traditional Media (television, radio and print news)

Schools Closed, What's Next?

Don't forget to brush up on your student's AMI / Ready For Learning plan! With the Alternate Method of instruction, learning continues no matter the weather. You should have received information from your child's school about class assignments on inclement weather days or any other day school may be closed during an unforeseen emergency. Now is a good time to familiarize yourself with the plan, visit LRSD.org, click on Parents, then on the tab that says "AMI."

Little Rock School District

LRSD Pilots Free Rapid Testing for School Staff

The Little Rock School District took additional proactive steps this fall in the fight against the pandemic by voluntarily participating in a pilot program administered through the Arkansas Department of Health for COVID-19 on-site testing options. The 15-minute BinaxNow nasal swab test allows asymptomatic staff to be tested, helping to provide a comfort level and serving as a useful tool in reducing the risk of spread with early detection. Central and Parkview were the first two sites, identified by ADH, to offer the Binax testing kits to employees, who volunteer, at their work site. This test which provides rapid antigen results. Participants are able to be tested each week, and receive results in 15- 30 minutes that assist with diagnosis of the virus that causes COVID-19. Antigen tests can be used as a predictor for further testing, if exposure is suspected.

“Most teachers take advantage of this opportunity to test weekly and have shared their appreciation about of this free safety measure. The process moves quickly and efficiently. We have been able to identify teachers with no symptoms who still tested positive. So this service is great for early identification and prompt isolation of those who could have unknowingly infected students and coworkers,” said Margo Bushmiaer, LRSD nursing coordinator.

LRSD nurse Christine Duellman also added, “Just as we screen all students for vision and hearing to identify any unknown issues, COVID screening uses the same concept. We would love to screen 100% of our staff weekly. I try to end my encounter with each person at testing sites by telling them I’ll see them next week and reminding them to bring a friend.”

Four additional campus began testing this week; Little Rock Southwest High, Little Rock West High School of Innovation, Pinnacle View Middle School and Don Roberts Elementary. More health-related information may be found on the Health Services page on LRSD.org.

***See LRSD’s Annual Report on page 13 for details about support to staff and students with Personal Protection Equipment.**



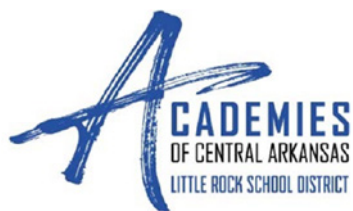
Kicking into High Gear with Academies of Central Arkansas & Ford NGL

LRSD high school students have even more options to help them prepare for college and/or career now that the Academies of Central Arkansas are in full-fledged recruitment mode. Themed academies will offer several pathways for students to test drive specific careers, earn industry certifications, and gain college concurrent credit, if available, starting in their sophomore year. Students will also be exposed to job shadowing and intern/externship opportunities.

During their freshman year, students select an academy, which becomes a small learning community within the high school. Core academics are taught through the lens of the academy. LRSD will offer multiple pathways so that every student can choose a program that fits a personal interest. This integrated approach will help students connect with core academics, find their career interests, and create a plan to pursue their academic and career goals. LRSD will be phasing in academies over the

next few years as we transition from our current high school structures to the academies structure.

Established in 2019, the Academies of Central Arkansas are the result of an unprecedented partnership with superintendents and chambers of commerce from the metro areas of Little Rock, North Little Rock, Pulaski County and Jacksonville. Currently designed pathways are listed in the chart below. To learn more about a specific academy, contact the school to which it is attached. Staff will be happy to give you a tour.



ACADEMIES and PATHWAYS			
LR Hall STEAM Magnet	Academy of Engineering	Academy of Health Sciences	
	Computer Science Software Development	Biomedical Sciences	
	Computer Science Game Development	Medical Professions (Dental)	
	Pre-Engineering Integrated Manufacturing	Medical Office Administration	
		Health & Nutrition	
Parkview Arts & Sciences Magnet	Academy of Performing and Production	Academy of Visual Arts & Marketing	Academy of Science
	Dance	Visual Arts	General Sciences
	Drama	Visual Communications	Applied Sciences
	Music	Graphic Design	Military Sciences/Navy JROTC
	Audio/Video Engineering	Advertising/Digital Marketing	EXCEL Medical Professions (CNA, CCMA, or Pharmacy Tech)
LR Southwest High School	Academy of Aerospace & Medical Sciences	Academy of Business & Computer Science	Academy of Leadership & Public Service
	Aerospace & Drone Engineering	Banking	Human & Social Services
	Biomedical Sciences	Business Marketing & AVT Design	Law & Leadership
	Health & Nutrition	Mobile Application Development	Pre-Educator
	Sports Medicine	Drafting & Robotics	
LR West High School	Academy of Agriculture Business & Innovation		
	Veterinary Science & Industry		
	Horticulture Technology		
	Logistics & Supply Chain Mgmt.		
Advanced Professional Studies Global Pathways (Off-site)	Entrepreneurship & Innovation	Health & Human Services	Skilled Trades
	Makerspace for Photography & Digital Design	Culinary Arts	Automotive Services
	Tech Makerspace	Law Enforcement	Automotive Collision Repair
		Education & Training	Construction
		Fire & Emergency Medical	Automation Industrial Technologies
		Medical Professions (CNA, CCMA, or Pharmacy Tech)	Welding
NOTE: Students enrolled in Global Pathways at Metro or EXCEL will be "global students," assigned by school to a school academy. Students may select these pathways as freshmen and begin the entry level course as sophomores. All courses will be double-blocked: Courses will meet either AM or PM and will follow the A/B schedule, taking 2 periods of a student's schedule.			





LR Southwest High School



Finally, the Gryphons have arrived! The 2020-21 school year ushered in a new era for LRSD with the opening of Little Rock Southwest High School, 9715 Mabelvale Pike - the first new high school built in the District in 50+ years. The grand opening was styled differently, live streamed with a limited in-person audience and a student-led virtual TikTok tour of the massive campus. With all the academic bells and whistles of a 21st century learning environment, Gryphon students and staff are ready to soar. #FollowtheGryphons @LRSouthwestLRSD

Fun Facts: School Capacity - 2,250

* Total Sq Ft - 410,000

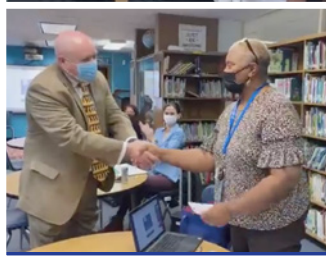
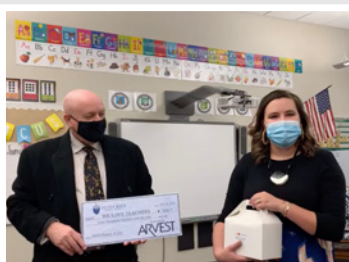
* Facility - 950 Sq Ft standard classrooms with labs up to 1,500 Sq Ft for science, visual and performing arts, robotics, and drafting

* 1,200 seat auditorium with orchestra pit

* 20 plus proposed Advanced Placement courses

* Dance studios that can be converted to blackbox theater

* Studio Apartment-style CBI classrooms



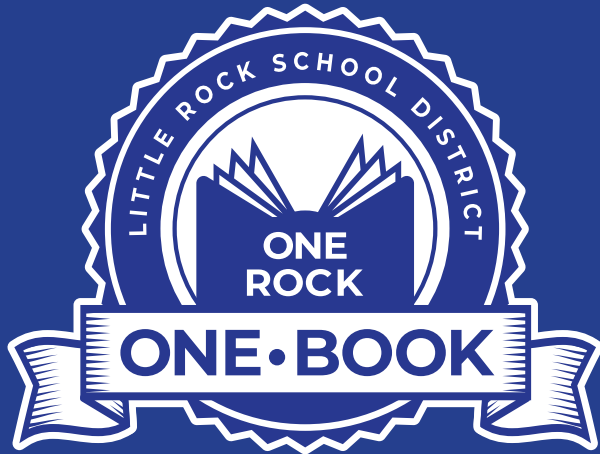
#CaughtDoingGood

The COVID-19 pandemic created new challenges for everyone. But that didn't stop LRSD staff members from going beyond the call of duty in the 2020 and 2021 school year. Whether they were dropping off meals and school supplies to the homes of students, hosting late evening tutoring sessions, or lending a helping hand at school, no job has been too big or too small for the team of dedicated LRSD education professionals. As a result, Superintendent Mike Poore began giving a social media "shout out" to nominated certified and classified staff members. In addition to surprising each staff person by showing up unannounced to recognize him/her, Poore provides a gift certificate for the employee to enjoy lunch on him. While it is a small token for the huge impact these unheralded heroes have on students daily, it is a way to publicly thank them. Honorees as of this date include: Phillip Taber - Mabelvale Middle, Regina Young - Pulaski Heights Elementary, Kristyn Richard - Bale; Tommie Shelton - Supply Center; Cheryl Woodruff - Fulbright; Brock Wynne, Dunbar; Thao Le, Jaime Gill, Syreta Bush - Roberts; Chris Montgomery - Fair Park, Julie Robinson - Dodd, Dawna Hawkins - Otter Creek, Stacie Gatewood - Terry, Shyrletta Wilson - Meadowcliff, Jack Garvey - Central Office.

Use #CaughtDoingGood to find out more information about these outstanding employees on LRSD's Facebook page.

Little Rock School District

For the Love of Reading –
Same Mission Different Name



LRSD continued efforts to support literacy and building foundational reading skills for elementary students through its initiative, which is now called **One Rock One Book**. More than 12,000 students learning in-person and virtually will receive this year's book, *Billy Sure – Kid Entrepreneur*, and will be able to take advantage of resources thanks to this year's donors and in-kind sponsors (listed in the graphic above). In addition to encouraging family reading, teachers hope the book will spark imaginations and inspire students' creativity. Several activities associated with this year's reading campaign will include research, inventions, marketing and budgeting, all embedded in the curriculum. The culminating event will again feature *Shark Tank* styled presentations with cash prizes to the winning submissions. Families are invited to post pictures of related activities to social media using the hashtag, #LRSD1Rock1Book and #BSure2Read.

PROVIDED BY



Speaking of Reading...

The virtual ViPS Jane Mendel Reading was a huge success this year with the community donating more than 1,200 new books to elementary schools for their libraries. Students also enjoyed reading activities that included Superintendent Mike Poore and costumed volunteers appearing in classrooms and homes via Zoom and Facebook. Want to learn more about how you may donate to ViPS (Volunteers in Public Schools) or get involved, visit the ViPS page on lrstd.org.



Tigers Bounce to State Title Despite COVID Cancellation

Little Rock Central Boys Basketball team was named Co-State Champion last spring following an incredible season and the cancellation of the state tournament in a 6A game that would have pitted them against Conway. Canceling the tournament was a decision that the Arkansas Athletics Association did not make lightly, but one that prioritized the health and safety of student athletes on the heels of a pandemic.

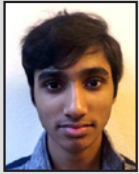
The move by the AAA meant that any finalist, whose game was not played, would be awarded a state title. But, for the record, we were always betting on the Tigers.



Honoring National Merit Semifinalists, Commended and Principal's Scholars

❖ National Merit Semifinalist, ◆ Commended Scholar, ● Principal's Scholar

LITTLE ROCK CENTRAL HIGH SCHOOL



Paavan Atluri
LR Central High
❖



Alex Borengasser
LR Central High
Perfect 36 ACT Score
❖



Hailey Bruckman
LR Central High
❖



Nicole Doris
LR Central High
◆



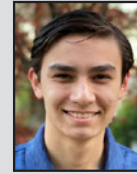
Deniz Erdag
LR Central High
Perfect 36 ACT Score
❖



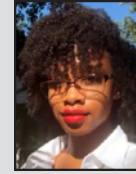
Madeleine Gess
LR Central High
❖



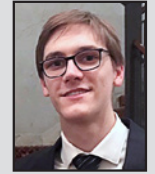
Kathleen Jackson
LR Central High
Perfect 36 ACT Score
❖



Samuel Lu
LR Central High
Perfect 36 ACT Score
❖



Laila Meredith
LR Central High
●



Ian Morris
LR Central High
◆



Saitej Mummadi
LR Central High
❖



Timmy Nguyen
LR Central High
●



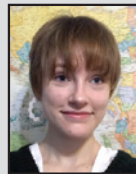
Telly Noel, Jr.
LR Central High
●



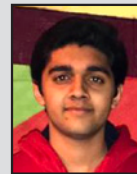
Edward Onisei
LR Central High
❖



Joseph Park
LR Central High
Perfect 36 ACT Score
❖



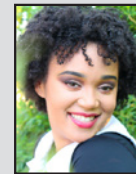
Lily Parson
LR Central High
◆



Amitkumar Patil
LR Central High
❖



Christian Peer
LR Central High
●



Kendal Peyton
LR Central High
●



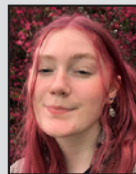
Ira Roudachevski
LR Central High
◆



Cecelia Schneider
LR Central High
❖



Brooklyn Starkey
LR Central High
●



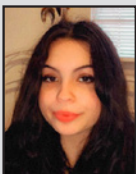
Sophie Sward
LR Central High
◆



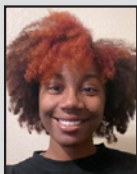
Anna Yates
LR Central High
●



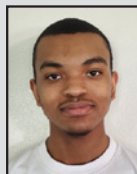
LITTLE ROCK SOUTHWEST MAGNET HIGH SCHOOL



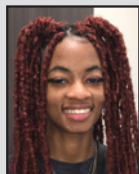
Brianna Brotzman
LR Southwest High
●



Jayla Davis
LR Southwest High
●



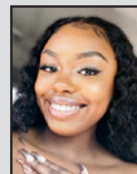
Jorden Day
LR Southwest High
●



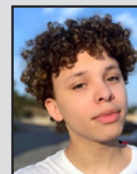
Messiah Hill
LR Southwest High
●



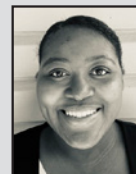
Mya Ingram
LR Southwest High
●



Indeia McBride
LR Southwest High
●

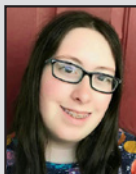


Marcus Smith
LR Southwest High
●



Makayla Washington
LR Southwest High
●

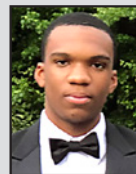
LITTLE ROCK PARKVIEW ARTS SCIENCE MAGNET HIGH SCHOOL



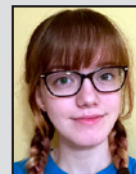
Lorelai Daniel
LR Parkview High
❖



Kaward Jolly
LR Parkview High
●



Isaiah Kamanga
LR Parkview High
●



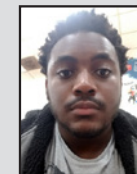
Leah Kline
LR Parkview High
◆



Hieu Pham
LR Parkview High
●

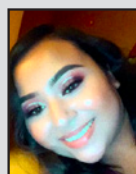


Mohammad Fawad
Raja
LR Parkview High
●



Clarence Roper
LR Parkview High
●

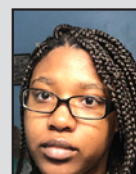
LITTLE ROCK HALL STEAM MAGNET HIGH SCHOOL



Maria Avalos
LR Hall High
●



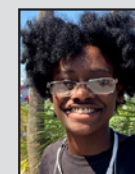
Samantha Barrera
LR Hall High
●



Teariney Freeman
LR Hall High
●



Tlyna Phillips
LR Hall High
●



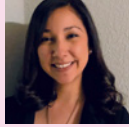
Lyriqal Williams
LR Hall High
●



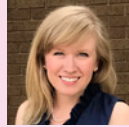
Elementary Teachers of the Year



Clara Brown
Bale



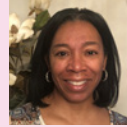
Perla Andrade
Baseline



Emily Hester
Booker Arts Magnet



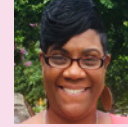
Lameka Thomas
Brady



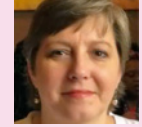
Teata Pace
Carver Magnet



Adrienne Hawkins
Chicot



Carla Abraham
David O'Dodd



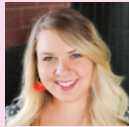
Christina Ross
Fair Park ECC



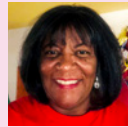
Amber Harbin
Forest Heights STEM
Academy (K-5)



Jennifer Ellis
Forest Park



Jordan Sorrells
Fulbright



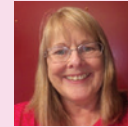
Angela Doyne
Geyer Springs ECC



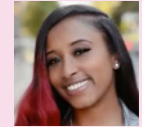
Renada Burt
Gibbs Magnet



Leigh Cooper
Jefferson



Brenda Harris
M.L. King



Khristen Dobbins
Mabelvale Elem.



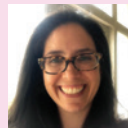
Nolan Brown
McDermott



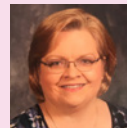
Stacey Jackson
Meadowcliff



Tari Anderson
Otter Creek



Mimi Parrish
Pulaski Heights Elem.



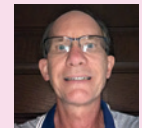
Cynthia Skinner
Roberts



Evelyn Jones
Rockefeller Elem. and ECC



Jada Richardson
Romine



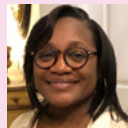
Shawn Williams
Stephens



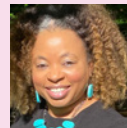
Cher Fields
Terry



Tonya Courtney-Nichols
Wakefield



Ophelia Holloway
Washington



Tracy Debro
Watson



Feather Linn
Western Hills

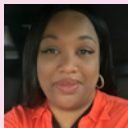


Emily Grace Fitz
Williams Magnet

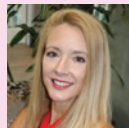
Middle School Teachers of the Year



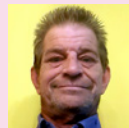
LaKeitha Austin
Cloverdale



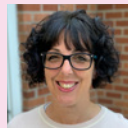
Shantail Miller
Cloverdale



April Moore
Dunbar



Oliver Scott
Dunbar



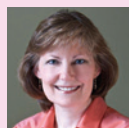
Emily Vaughn
Forest Heights STEM
Academy (6-8)



Katina White
Forest Heights STEM
Academy (6-8)



Kwadjo Boaitey
Henderson



Sherry Keck
Henderson



Sandra Childs
Mabelvale



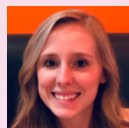
Yolanda Watson
Mabelvale



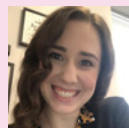
Leslie Brooks-Jackson
Mann Arts & Science
Magnet



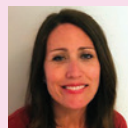
Jackie Scott
Mann Arts & Science
Magnet



Helena Smiley
Pinnacle View



Jamie Trost
Pinnacle View



Carey Sellers
Pulaski Heights



Alvin Turner
Pulaski Heights



LITTLE ROCK SCHOOL DISTRICT

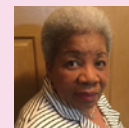
Crystal Awards

2020

High School Teachers of the Year



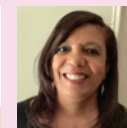
Melanie Lacy
Accelerated
Learning Center



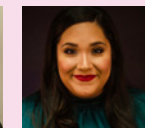
Bobbie Sanders
The LR Adult
Education Center



Rosetter Dirden
LR Central



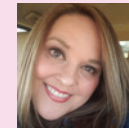
Karen Hammons
LR Central



Rosie Valdez Block
LR Central



Brandy Johnson
LR Hall



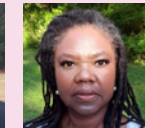
Jaimie Hatfield-Young
LR Hall



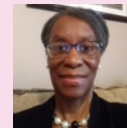
Kendrick Rojey Moore
LR Hall



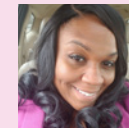
Jaime Dunn
Hamilton
Learning Academy



Agnolia Gay
J.A. Fair



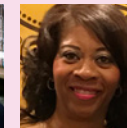
Sharon Jackson
J.A. Fair



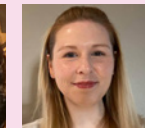
Kristina Peterson
J.A. Fair



Amy Howard
McClellan



Stephanie K'Nuckles
McClellan



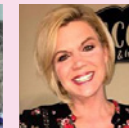
Meredith Lusk
McClellan



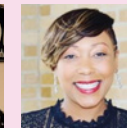
Warren Booker, Jr.
Metropolitan Career-
Technical Center



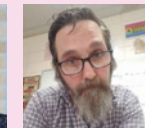
Rebekah Bailey
LR West
High School



Monica Pendleton
LR West
High School



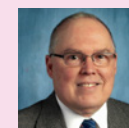
Jonas White
LR West
High School



Mark Shepherd
Parkview



Neitasha Tims
Parkview



Lynn Smith
Parkview



AMBER HARBIN
2020 LRSD TEACHER OF THE YEAR



LITTLE ROCK SCHOOL DISTRICT

Crystal Awards

2020



TARI ANDERSON
2020 LRSD ELEMENTARY SCHOOL
TEACHER OF THE YEAR



JACKIE SCOTT
2020 LRSD MIDDLE SCHOOL
TEACHER OF THE YEAR



LYNN SMITH
2020 LRSD HIGH SCHOOL
TEACHER OF THE YEAR

Classified Employees of the Year



PORCHIA JORDAN
2020 LRSD CLASSIFIED
EMPLOYEE OF THE YEAR



Kevin Murry
LRSD Custodian
of the Year



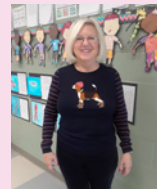
Lisa Holliday
Maintenance Employee
of the Year



Jodi Pullen
LRSD Occupational
Therapist of the Year



Jennifer Fisk
LRSD Physical
Therapist of the Year



Donn Francart
LRSD Paraprofessional
of the Year



Pam Kuhn
LRSD Nurse
of the Year



Kami Rowland
LRSD Speech
Therapist of the Year



Neva Johnson
LRSD Secretarial and
General Support
Staff of the Year



Tina Robinson
LRSD Transportation
Employee of the Year

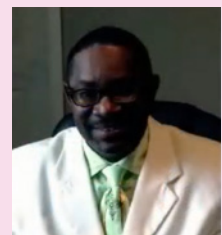


Elisha Nelson
LRSD Safety and Security
Officer of the Year

First Student Employees of the Year



Tanya Bell
2020 First Student
Employee of the Year



James Hayes
2020 First Student
Driver of the Year



Top scholars Honored at Academic Signing Day

The Little Rock School District, in partnership with the Public Education Foundation, honored students representing all five LRSD high schools at the 16th annual Academic Signing Day.

Class of 2020 honorees were accepted at prestigious higher education institutions throughout the country, including: Baylor University, Belmont University, Brandeis University, Dartmouth College, Duke University, Emory University, Grinnell College, Harvard University, Rhodes College, Stanford University, Tulane University, United States Air Force Academy, University of California, University of Southern California, Vanderbilt University, and Yale University, to name a few.

The event mirrors athletic signing days, where top athletes sign letters of intent to compete at the collegiate level. As with athletic signings, high-achieving students choosing to study here in Arkansas and out of state are equally celebrated.

To qualify for the event, graduates are required to achieve at least one of the following: a cumulative 4.0 grade-point average in grades nine through 12; valedictorian, salutatorian, or the third or fourth highest rank in their class; National Hispanic Scholar; National Merit Semifinalist; and/or National Merit Commended Scholar.

Annually, LRSD students are awarded more than \$23 million in scholarships.

Freshmen should start inquiring at the beginning of their 9th grade year about participating in this prestigious academic celebration.

The Public Education Foundation and the Little Rock School District Present the 2020 Class For *Academic Signing Day*



LITTLE ROCK
SCHOOL DISTRICT





2019-2020 ANNUAL REPORT LITTLE ROCK SCHOOL DISTRICT

The Little Rock School District (LRSD) is required to prepare an Annual Report for presentation to the community. The 2019-20 meal report highlights progress and achievements, provides a summary of planned improvement processes and future directions, and shares information about LRSD's pivot to a virtual delivery at the onset of the COVID-19 pandemic in the spring of 2020. When Governor Asa Hutchinson announced that Arkansas schools would be closed in March 2020, the District quickly navigated an unprecedented educational landscape to support students and staff, addressing Personal Protective Equipment (PPE) and technological needs, in addition to adjusting from an in-person to a virtual instructional approach. LRSD's Child Nutrition team also mobilized to work with multiple agencies to ensure that no students would go without meals during the remainder of the 2019-20 school year and over the summer.

Partners in this effort, which would eventually prepare, pack and distribute more than 680,000 meals to area families included: the City of Little Rock, Clinton Center, World Central Kitchen, Arkansas Hunger Relief Alliance, Central Arkansas Library System (CALS) and Rock Region Metro.

This report also pays tribute to the LRSD teachers and other school staff who, in conjunction with community members, worked tirelessly to provide students with academic, social, and emotional support.

LRSD remains committed to meeting the needs of each student. From rigorous academic engagement for those identified as gifted and talented, to support for those facing learning, speech or physical challenges, LRSD offers unique, comprehensive educational approaches for pre-K to 12th grade students.

The District takes pride in its highly qualified teachers – nearly half of all classroom teachers have a masters or doctoral degree, and 155 have National Board Certification – among the most in the state. LRSD continues to operate the state's only K-8 STEM campus, eight magnet schools and a uniquely focused language and literacy elementary academy, and last year, continued to expand LR West High School of Innovation, adding a 10th grade class. Subsequent grades will be added each year for a 9-12 delivery. LR Hall STEAM Academy was also introduced, enhancing its focus on science and engineering academies under the Academics of Central Arkansas (Ford NGL) umbrella.

LRSD is the state's largest provider of public preschool programs with certified teachers in every class. The District's 1,700 pre-K students continued to outperform students who did not use LRSD's pre-K program in every skill area.

High school college preparatory programs, including pre-AP, AP; concurrent credit opportunities with local universities; and the District's Excel program, provide multiple options for families. These programs allow students to align their educational experience with their interests, preparing them for college and career, and equipping them to meet the challenges of a global society. LRSD consistently places among the top tier of state schools with National Merit Semifinalists, as well as Commended, National Hispanic, and AP Scholars.

LRSD is proud of its highly accomplished students and the community partnerships that enhance their educational experiences. Students will continue taking their learning to the next level at the newly constructed career-academy-focused Little Rock Southwest High School.

LRSD finished its final year of state oversight following an initial "Academically Distressed" designation for 6 of 48 schools in 2015. The Academically Distressed designation was dissolved due to new legislation removing the remaining schools. Under the legislation, the District was classified in "Level 5 – in need of intensive support" as a result of eight newly identified schools.

To better determine areas of needed support for those schools and to provide resources that include best practices for all LRSD campuses, the District has worked in collaboration with the Arkansas Department of Education to provide additional assistance and developed the **District's Level 5 Exit Plan** to guide each elementary, middle and high school with a roadmap that identifies and organizes strategies and resources that will lead to student success. Each school's School Improvement Plan (SIP) highlights three main goals for improvement, with one of the goals being academic improvements. The District also created a District Support Plan (DSP) to facilitate implementation of each school's SIP and to specifically address deficits in academic achievement. The District ensured that the school's SIPs and the District's DSP aligned with the District's Level 5 Exit Plan. The **Level 5 Exit** reflects criteria/ goals that the District must implement/ accomplish to assure the DESE, the State Board, and the community that LRSD is poised for the present and future academic success of its students. The approach taken in this **Exit Plan** continues to focus on developing coherence within and among schools so that together teachers and administrators establish a new baseline understanding of high-quality instructional approaches and curriculum expectations. This **Exit Plan** and artifacts will be made public on the Little Rock School District Website. The **Exit Plan** includes the following criteria:

- Collaborative teams regularly interact to address common issues regarding curriculum, assessment, instruction, and the achievement of all students.
- The school provides teachers with clear, ongoing evaluations of their pedagogical strengths and weaknesses that are based on multiple sources of data and are consistent with student achievement data.
- The school literacy curriculum and accompanying assessments adhere to state and district standards.
- The school manages its fiscal, operational, and technological resources in a way that directly support teachers to provide a safe, supportive and collaborative culture and increase student achievement.

The administration continued its stakeholder engagement efforts integrating interactive social media outreach and public forums. Those efforts will continue in the 2020-21 school year.

Over the past three years, LRSD has reduced its budget, while implementing proven reforms that include improving systems, hiring and retaining excellent teachers, and making academic gains. A

Second Lien loan has allowed the District to improve facilities while addressing some of LRSD's most urgent physical plant needs. The District continues to seek financial efficiencies in order to maintain a focus on strong academic achievement and fiscal stability.

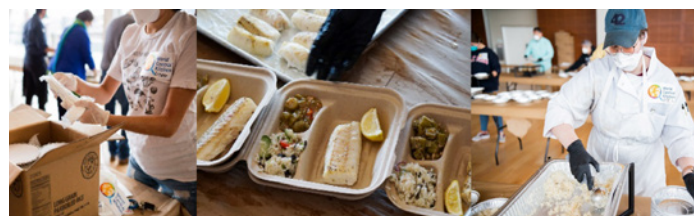
The LRSD community is currently represented by a 7-member, state-appointed Community Advisory Board which succeeded the Civic Advisory Committee at the end of the 2015-16 school year. Arkansas Department of Education Secretary Johnny Key serves as the District's Board of Directors. Starting in 2021, the newly elected, nine-member LRSD School Board will represent the community's interests.

LRSD reaffirms its commitment to collaboration with its multiple stakeholder groups and will continue to proactively address student achievement, teacher/leader quality, parental involvement, community engagement, and financial stability. The District maintains its mission is to provide students with equitable access to educational opportunities, equipping them with what they need to succeed.

CARES Act Funding

\$2,472,968.00	Technology – Chromebooks/Laptops/Schoology
\$805,710.76	PPE – Masks/N95 Kits Sanitizer/Sanitizer Wipes Temperature Scanners Face Shields/Eye Goggles Disposable Gowns Meal Prep Containers

\$3,278,678.76 TOTAL

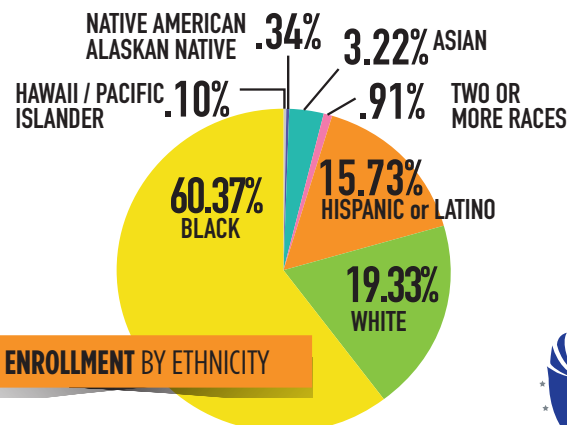


LRSD MEALS – March-July

Over 280,000 meals served to LRSD students

COMMUNITY PARTNER MEALS - July-August

Over 680,000 meals served to area students



PROGRESS TOWARDS DEPARTMENT OF EDUCATION GOALS

• SCHOOL IMPROVEMENT DESIGNATIONS •



2019-2020 School Year Accreditation Status: All 42 schools fully accredited

2019-2020 School Improvement Designations

Twenty-two (22) schools were classified as In Need of Support and Improvement schools. LRSD identified as a Level 5 district. Needs Support and Improvement schools had a lower Every Student Succeeds Act (ESSA) School Index score overall or for a specific subgroup. A high school will be "In Need of Support and Improvement" if it does not meet the graduation rate target. Fourteen (14) schools were identified as In Need of Targeted Support and Improvement (TSI) or Additional Targeted Support (ATS) schools. Schools are identified as in need of TSI based on their classification as a Title I school and their ESSA School Index score for any subgroup falling below an established 1% cut score for three consecutive years. Schools are identified as in need of ATS when a subgroup is also performing below the 5% cut score. Eight (8) schools were classified as In Need of Comprehensive Support and Improvement (CSI) schools. Two (2) of these schools have since closed and one (1) was reconstituted. CSI schools include 5% of Title I schools with the lowest ESSA School Index score over a three year period.

AP and PSAT/NMSQT Results

AP RESULTS

The Advanced Placement (AP) program offers high school students a rigorous, college-level curriculum that readies students for college. Students scoring a 3, 4, or 5 on the AP exam may receive college credit. The district had 1,432 exams with a qualifying score of a 3, 4, or 5. An AP Scholar is a student who received scores of 3 or higher on three or more AP exams. The district has 309 scholars receiving 340 awards with the following designations: AP Scholar, AP Scholar with Honor, AP Scholar with Distinction, and National AP Scholar. Twenty-three students received an AP Capstone Diploma, and three students received the AP Seminar and Research Certificate.

PSAT/NMSQT

The Preliminary SAT/National Merit Scholarship Qualifying Test (PSAT/ NMSQT) serves as an initial screener for scholars. The nationwide pool of Semifinalists represents fewer than one percent of U.S. high school seniors and only includes the highest scoring students in each state. 13 LRSD students were named National Merit Semifinalists.

PROGRESS TOWARDS DEPARTMENT OF EDUCATION GOALS

RANKINGS (BASED ON 2019):

Top 20 Schools in Arkansas with Most Overall Growth (based on ACT Aspire)

#20	Jefferson Elementary	OVERALL
-----	----------------------	---------

Top 5 Schools in Central Region with Most Math Growth (based on ACT Aspire)

#5	Jefferson Elementary	MATH
----	----------------------	------

US NEWS AND WORLD REPORT RANKINGS

BEST HIGH SCHOOLS IN ARKANSAS

#22 of 269	Parkview Magnet High School
#18 of 269	Central High School

BEST HIGH SCHOOLS IN ARKANSAS METRO AREA

#7 of 44	Parkview Magnet High School
#5 of 44	Central High School

Schools Exceeding Overall Growth Expectations (based on 2019 ESSA Overall VAS)

BASILINE ELEMENTARY SCHOOL
CHICOT ELEMENTARY SCHOOL
DAVID O. DODD ELEMENTARY SCHOOL
DON ROBERTS ELEMENTARY SCHOOL
FOREST HEIGHTS STEM ACADEMY
FOREST PARK ELEMENTARY SCHOOL
FULBRIGHT ELEMENTARY SCHOOL
GIBBS MAGNET ELEMENTARY SCHOOL
HALL HIGH SCHOOL
JEFFERSON ELEMENTARY SCHOOL
MANN MAGNET MIDDLE SCHOOL

MCDERMOTT ELEMENTARY SCHOOL
OTTER CREEK ELEMENTARY SCHOOL
PARKVIEW MAGNET HIGH SCHOOL
PINNACLE VIEW MIDDLE SCHOOL
PULASKI HEIGHTS ELEM. SCHOOL
ROCKEFELLER INCENTIVE ELEM.
TERRY ELEMENTARY SCHOOL
WAKEFIELD ELEMENTARY SCHOOL
WESTERN HILLS ELEM. SCHOOL
WILLIAMS MAGNET ELEM. SCHOOL

Schools Exceeding Math Growth Expectations (based on 2019 ACT Aspire)

DON ROBERTS ELEMENTARY
FOREST PARK ELEMENTARY
FOREST HEIGHTS STEM ACADEMY
FULBRIGHT ELEMENTARY
GIBBS ELEMENTARY
JEFFERSON ELEMENTARY
MCDERMOTT ELEMENTARY

OTTER CREEK ELEMENTARY
PARKVIEW MAGNET HIGH SCHOOL
PINNACLE VIEW MIDDLE SCHOOL
PULASKI HEIGHTS MIDDLE SCHOOL
TERRY ELEMENTARY
WAKEFIELD ELEMENTARY

Schools Exceeding ELA Growth Expectations (based on 2019 ACT Aspire)

DON ROBERTS ELEMENTARY
FOREST PARK ELEMENTARY
FOREST HEIGHTS STEM ACADEMY
FULBRIGHT ELEMENTARY
GIBBS ELEMENTARY
JEFFERSON

OTTER CREEK ELEMENTARY
PULASKI HEIGHTS ELEMENTARY
ROCKEFELLER ELEMENTARY
TERRY ELEMENTARY
WAKEFIELD ELEMENTARY





LITTLE ROCK
SCHOOL DISTRICT

ENROLLMENT

Take advantage of unique and innovative educational opportunities by enrolling in one of LRSD's schools. LRSD offers magnet schools, specialty programs, and career/professional studies, with concurrent credit opportunities.

LRSD Student Registration Office

501-447-2950

or visit www.LRSD.org/StudentRegistration

PRE-K (P3-P4) ENROLLMENT

The LRSD offers a free pre-school education of exceptional quality so your child will have a great start to his/her education. Pre-Kindergarten classes are located throughout the District in both elementary schools and early childhood centers.

501-447-7360

or visit www.LRSD.org/EarlyChildhood

IMPORTANT DATES

PARENT CONFERENCE DAY 1

Monday, February 8
after school—3 hours
(school in session)

PARENT CONFERENCE DAY 2

STUDENTS OUT
Tuesday, February 9
after school—3 hours
(school in session)

ARTISTRY IN THE ROCK

Monday, March 15 - Wednesday, March 17,
9am-2pm
Thursday, March 18, 9am-2pm and 6pm-8:30pm

VIPS - AN EVENING FOR THE STARS

Tuesday, April 20 - 5:30-7:30 pm

AP EXAMS

Monday, May 3 - Friday, May 7, and
Monday, May 10 - Friday, May 14

TEACHER APPRECIATION WEEK

Monday, May 3 - Friday, May 7

OPPORTUNITY SCHOOL CHOICE WINDOW

May 1 Deadline • Parent application must be postmarked
July 1 • Notification from non-resident district

GRADUATION

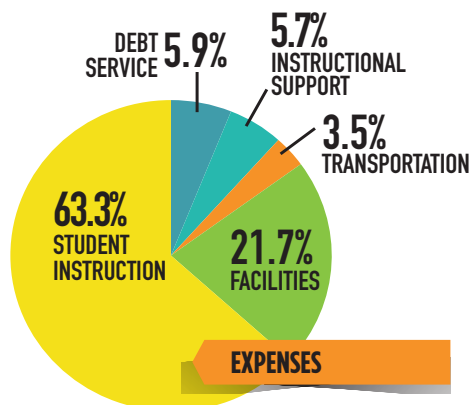
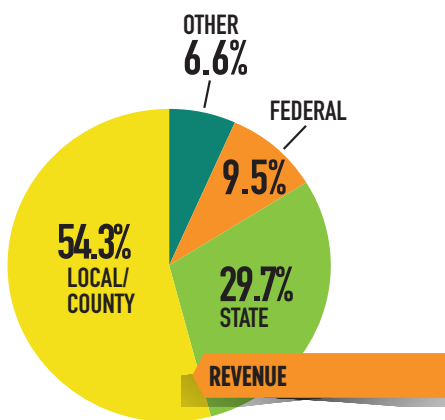
LR Hall - Tue, May 25 • 6:00pm (Simmons Bank Arena)

LR Parkview - Tue, May 25 • 8:30pm (Simmons Bank Arena)

LR Southwest - Wed, May 26 • 6:00pm (Simmons Bank Arena)

LR Central - Thu, May 27 • 6:00pm (Simmons Bank Arena)

2019-2020 REVENUE & EXPENSES



REVENUE

Local/County.....	\$165,212,019
State.....	\$90,300,523
Federal Grants.....	\$28,987,150
Other.....	\$20,022,348
Total Revenue.....	\$304,522,040

Tax Rate (Mills)..... 46.4

EXPENSES

Student Instruction.....	\$215,191,522
Instructional Support.....	\$19,304,916
Transportation.....	\$11,915,838
Support—Facilities.....	\$73,777,299
Debt Service.....	\$20,022,348
Total Expenses.....	\$340,211,923

Expense Per Pupil..... \$15,966

Average Teacher Salary..... \$61,254

First Year Teacher Salary..... \$36,000

LRSD's volunteer program, Volunteers in Public Schools (VIPS) is a vital component in the operation of all of our schools.

Total Volunteer Hours..... 969,975

Equivalent in Dollars..... \$24,666,483

Total Number of Partners in Education (PIE)280