

# Introducing Planet Earth

Reading A-Z Level L Leveled Book  
Word Count: 506



**Reading A-Z**

Visit [www.readinga-z.com](http://www.readinga-z.com)  
for thousands of books and materials.

LEVELED BOOK • L

# Introducing Planet Earth



Written by Celeste Fraser • Illustrated by Len Epstein

[www.readinga-z.com](http://www.readinga-z.com)

# Introducing Planet Earth



Written by Celeste Fraser  
Illustrated by Len Epstein

[www.readinga-z.com](http://www.readinga-z.com)

Introducing Planet Earth  
Level L Leveled Book  
© Learning A-Z  
Written by Celeste Fraser  
Illustrated by Len Epstein

All rights reserved.

[www.readinga-z.com](http://www.readinga-z.com)

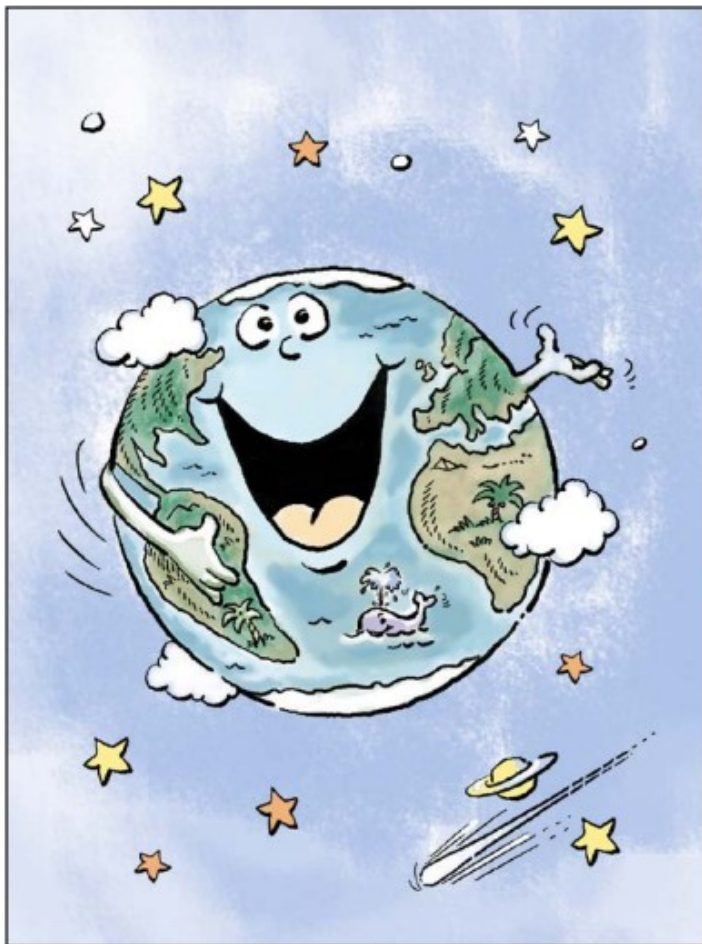
## Correlation

### LEVEL L

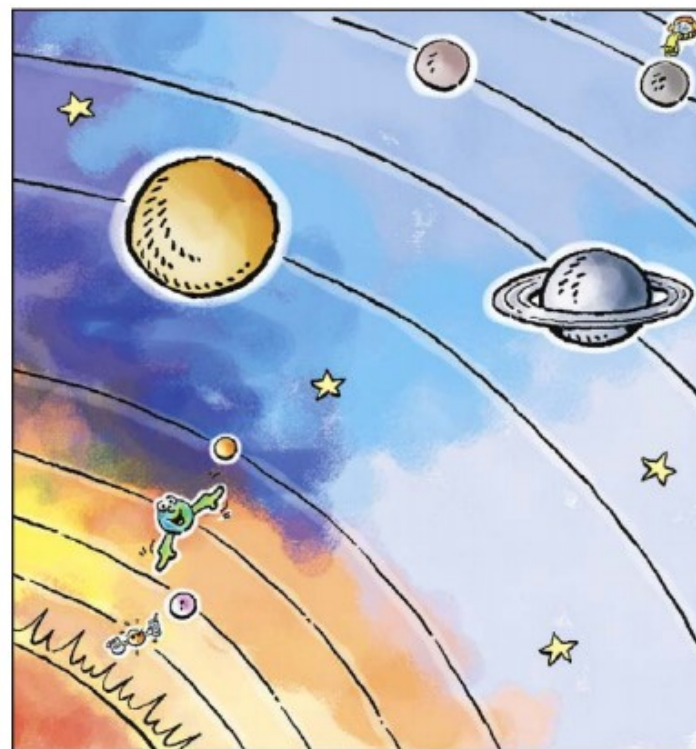
Fountas & Pinnell	K
Reading Recovery	18
DRA	20



Let me introduce myself. I am Planet Earth. I am the luckiest planet in our solar system. I can support life!



Look at Mercury so close to the Sun. Hot, hot, hot. Even one of my desert rats could not live in that heat!



Cold dwarf planet Pluto sits so far from the Sun. Brrrr. How would you like to be a frozen Popsicle Planet? Not me.

I have all the things life needs—  
land, water, air, and energy from  
the Sun.

I have five oceans and seven huge  
pieces of land called **continents**. On  
land, I even have lakes and rivers  
filled with fresh water that plants  
and animals need.



I spin like a top so that all living  
things have day and night. People  
call this *rotating*.



### Try This!

Want to see what makes day and night? Get a flashlight and a friend to be the Sun. You be Earth. Earth spins around slowly. It's daytime on the side of your body facing the Sun! It's nighttime on the side turned away from the Sun.



Because I am round like a ball, sunlight hits me unevenly. This makes parts of me hot and parts of me cold.

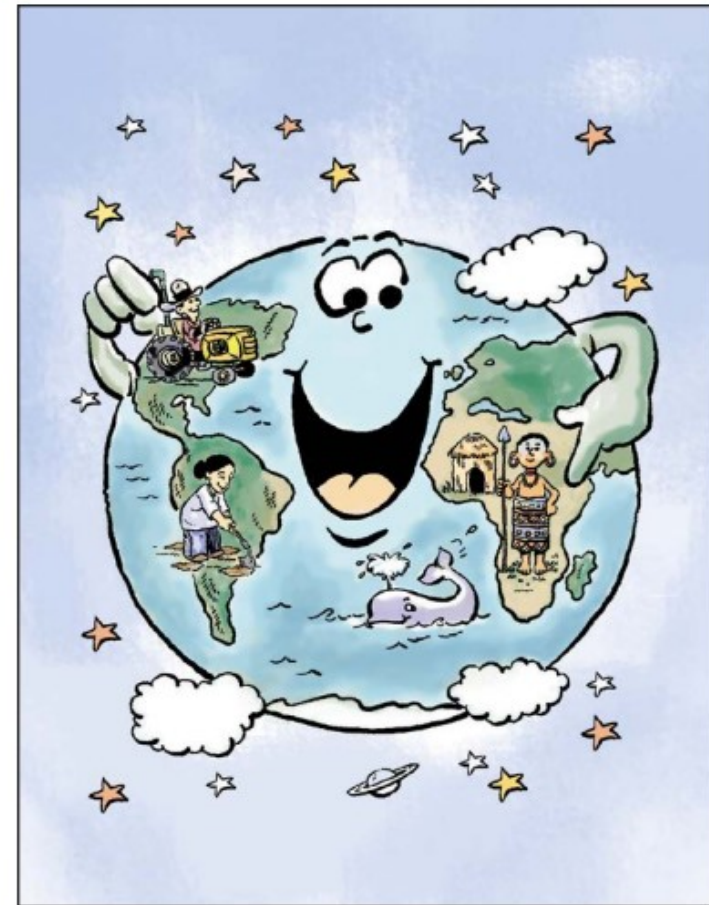
My fat belly gets the most direct sunlight, so it is hottest along my belt. This area is called the **equator**.



My **North and South Poles** get the least direct sunlight. The Sun's rays are weaker here than at my equator. These areas are my coldest.



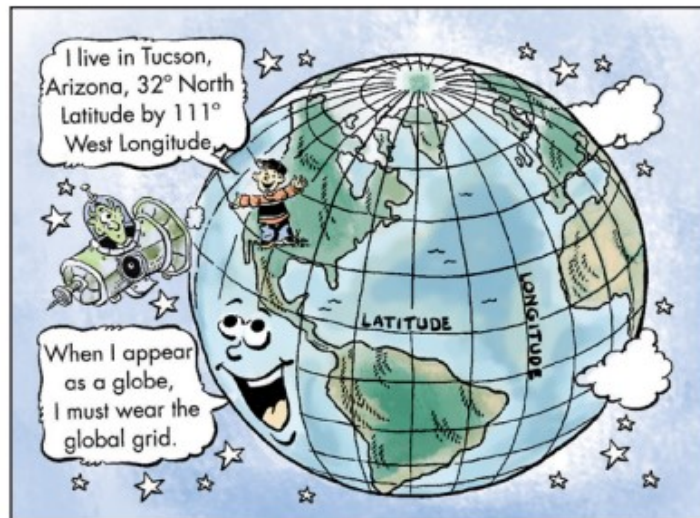
Whether it's hot, cold, or in between, creatures live all over me.



People live on all my continents; a few even live around the South Pole in **Antarctica**. Most people live in my milder parts where they can build homes and grow crops.



People travel all over my planet. Long ago, people got lost when sailing across my oceans. They needed a way to identify locations. So they invented a global grid, or lines that cross each other to form points anywhere on Earth. The lines that run north and south are **longitude** lines. The lines running east and west are **latitude** lines. This grid tells people where they are.



Oh, I almost forgot. I am **tilted**, too. As I travel around the Sun during my yearlong trip, I stay in my tilt. Sometimes I tilt toward the Sun, and sometimes away from it.

My tilt creates **seasons**. In January, my top half, or northern half, is tilted away from the Sun. That's winter when children in the northern half go sledding. At the same time, the southern half is pointed toward the Sun. It's summer there.

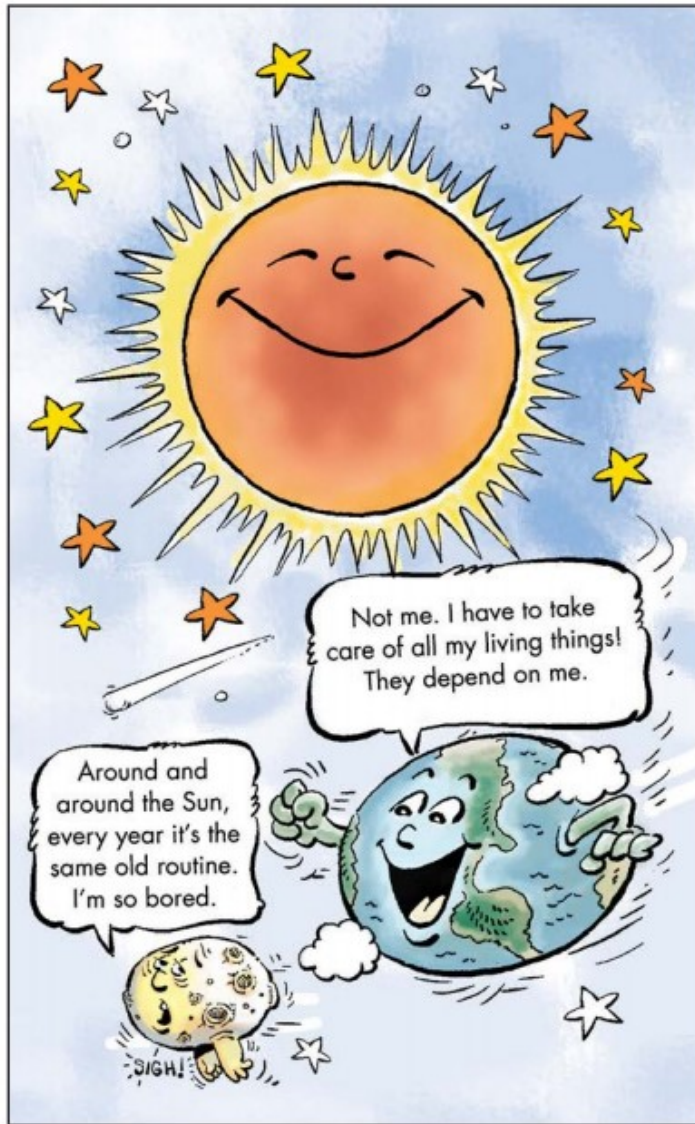








I am a planet you can trust.



## Glossary

- Antarctica** (*n.*) an ice-covered continent around the South Pole (p. 10)
- continents** (*n.*) the great divisions of land on Earth, including Africa, South America, Asia, Europe, North America, Australia, and Antarctica (p. 5)
- equator** (*n.*) an imaginary line that circles the Earth halfway between the North and South Poles (p. 8)
- latitude** (*n.*) distance in degrees north or south of the equator (p. 11)
- longitude** (*n.*) distance in degrees east or west of an imaginary line running north and south through Greenwich, England (p. 11)
- North and South Poles** (*n.*) the points farthest north and south on the Earth along its axis (p. 9)
- seasons** (*n.*) the four periods that a year is typically divided into (p. 12)
- tilted** (*adj.*) slanted, not straight (p. 12)

Name \_\_\_\_\_ Date \_\_\_\_\_

**Instructions:** Read each question carefully and choose the best answer.

1. What is this story mostly about?
  - (A) the seasons
  - (B) Planet Earth
  - (C) continents and oceans
  - (D) longitude and latitude
2. What are **continents**?
  - (A) animals
  - (B) special oceans
  - (C) islands in lakes
  - (D) large pieces of land
3. How is the northern half of Earth different from the southern half in January?
  - (A) It is daytime in the north and nighttime in the south.
  - (B) The north spins around faster than the south.
  - (C) The north is tilted closer to the Sun than the south.
  - (D) It is winter in the north and summer in the south.
4. If you plan a trip to the equator, which item should you leave at home?
  - (A) umbrella
  - (B) swimsuit
  - (C) warm coat
  - (D) sunscreen
5. Because Earth is tilted, it has \_\_\_\_\_.
  - (A) air
  - (B) sun
  - (C) lakes
  - (D) seasons
6. Why did the author most likely write this book?
  - (A) to teach readers about Earth
  - (B) to tell a funny story about Earth
  - (C) to convince readers to stay on Earth
  - (D) to invite readers to visit Mercury



Name \_\_\_\_\_ Date \_\_\_\_\_

7. Which sentence is an opinion?
- Ⓐ Earth is the luckiest planet.
  - Ⓑ Earth can support life.
  - Ⓒ Earth travels around the Sun.
  - Ⓓ Earth's tilt creates seasons.

8. **Longitude** and **latitude** lines identify \_\_\_\_\_.
- Ⓐ whether it is day or night
  - Ⓑ locations on Earth
  - Ⓒ different kinds of attitudes
  - Ⓓ the shape of the earth

9. What detail supports the main idea that Earth has seasons?
- Ⓐ Long ago, people got lost when sailing across the oceans.
  - Ⓑ The North and South Poles get the most direct sunlight.
  - Ⓒ Earth travels around the Sun once per year.
  - Ⓓ Earth has four oceans and seven continents.

10. Who was talking in this story?

- Ⓐ a boy
- Ⓑ Earth
- Ⓒ a star
- Ⓓ Mr. Jones

11. **Extended Response:** Why is it important to take care of the Earth?







